

Positive outlook for Pavilion!

Amid these times of national and global doom and gloom, Wethersfield can be cheerful about something! Attempts to obtain support and funding for a new pavilion on the Wethersfield Playing Field continue apace!

It was back in March 2007 when some of you will recall receiving notice about the Playing Field Association's application to the Big Lottery for funding to replace the pavilion.

We were ultimately unsuccessful in our bid to secure funding on that occasion but the fact that many of you registered your support by visiting the village hall to view plans and make pledges of skilled and unskilled labour has not been lost on the residents involved in the project.

Buoyed by the knowledge that the project had your support the project team have submitted a planning application and have pro-

gressed an application for funds from the Essex Environment Trust to a final stage.

The group have also been able to identify other sources of funding but to ensure that the Wethersfield community is able to take advantage of an attractive open space and pavilion that will provide for its needs in the long term it is important to continue raising funds and so we need your ongoing support. See the back page of this newsletter to find out how you can help with the project.

This special edition of the Wethersfield News is dedicated to showing you a selection of the latest work on the designs, to inform you of other details about the project's intentions going forward and just why we need you to get behind this exciting initiative.

You can begin by visiting the Village Hall on the 21st March when there will be an open forum and an opportunity to view the plans in more detail and to talk to the Pavilion project members.

South-facing View of the proposed new building.



The original design for the new pavilion has been modified to achieve a lower total cost for the build but the basic objectives remain the same, i.e:

- enable an extended range and increased use of the playing field site including pre-school; school and district sports; sports activities; major village events; society and club events; drama workshops and outdoor productions; youth music rehearsals; children's parties, receptions, fetes, play space.

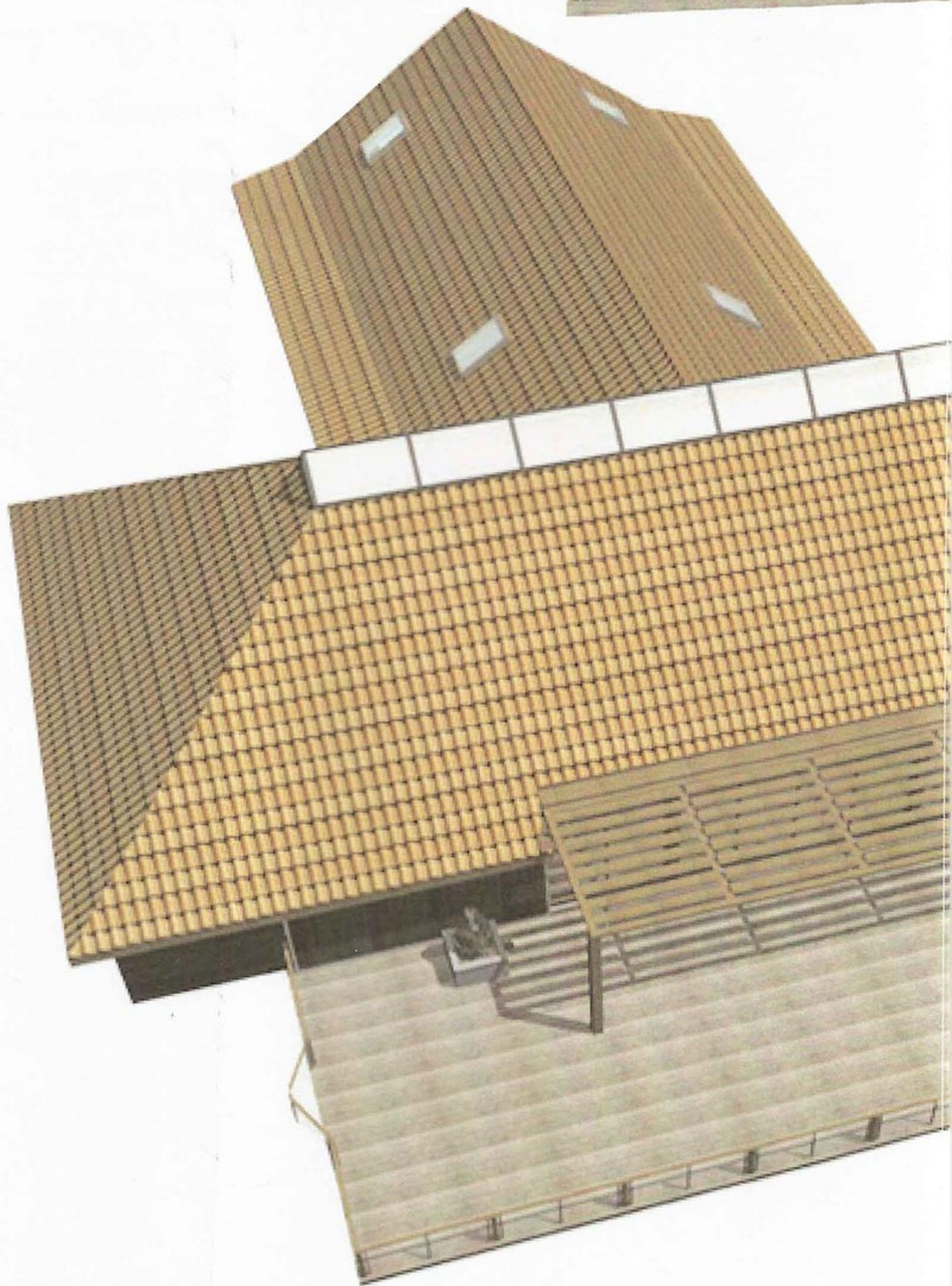
- create a building, which has a small carbon footprint and is an exemplar for other rural community projects. Plans focus on not just financial viability but also environmental sustainability through careful choice of energy regimes and a construction method, which involves materials that respect the building's location in a Special Landscape Area and Conservation Area.

- replace an outmoded building which is energy inefficient, inaccessible to some groups, difficult to maintain and unattractive to existing and potential users.

- provide a focus to village life and complement other facilities in the village, which attract all groups within the locality and in which the community is fully involved from day one, including involvement in the construction of the building.

- provide long term viability to the future active use of the playing field by creating a vibrant community building within the site, leading to increased use and greater energy efficiency.

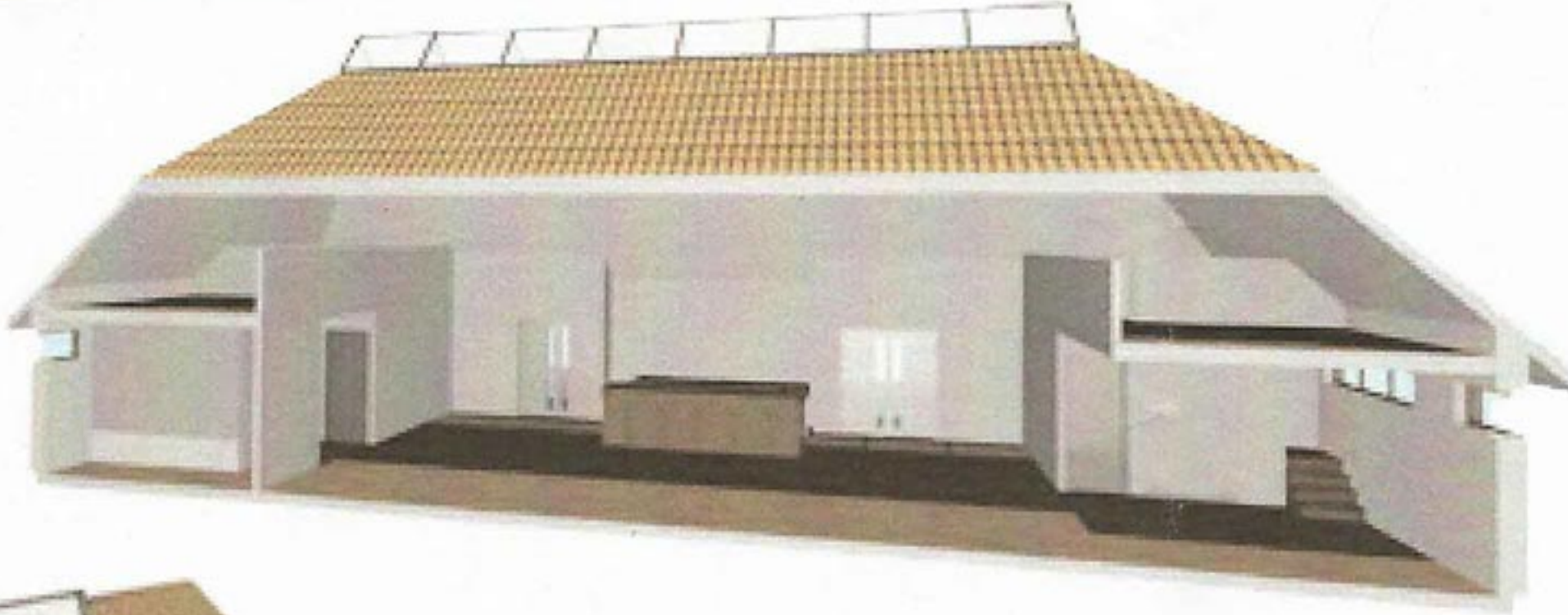
- secure the removal of several temporary, unsightly structures and replace them with a building, which, through the selection of materials and built form will respond to the most recent professional and governmental advice and recommendations and meet the current policy aims of the council





Left: South facing elevation featuring glass frontage, and fenced off deck

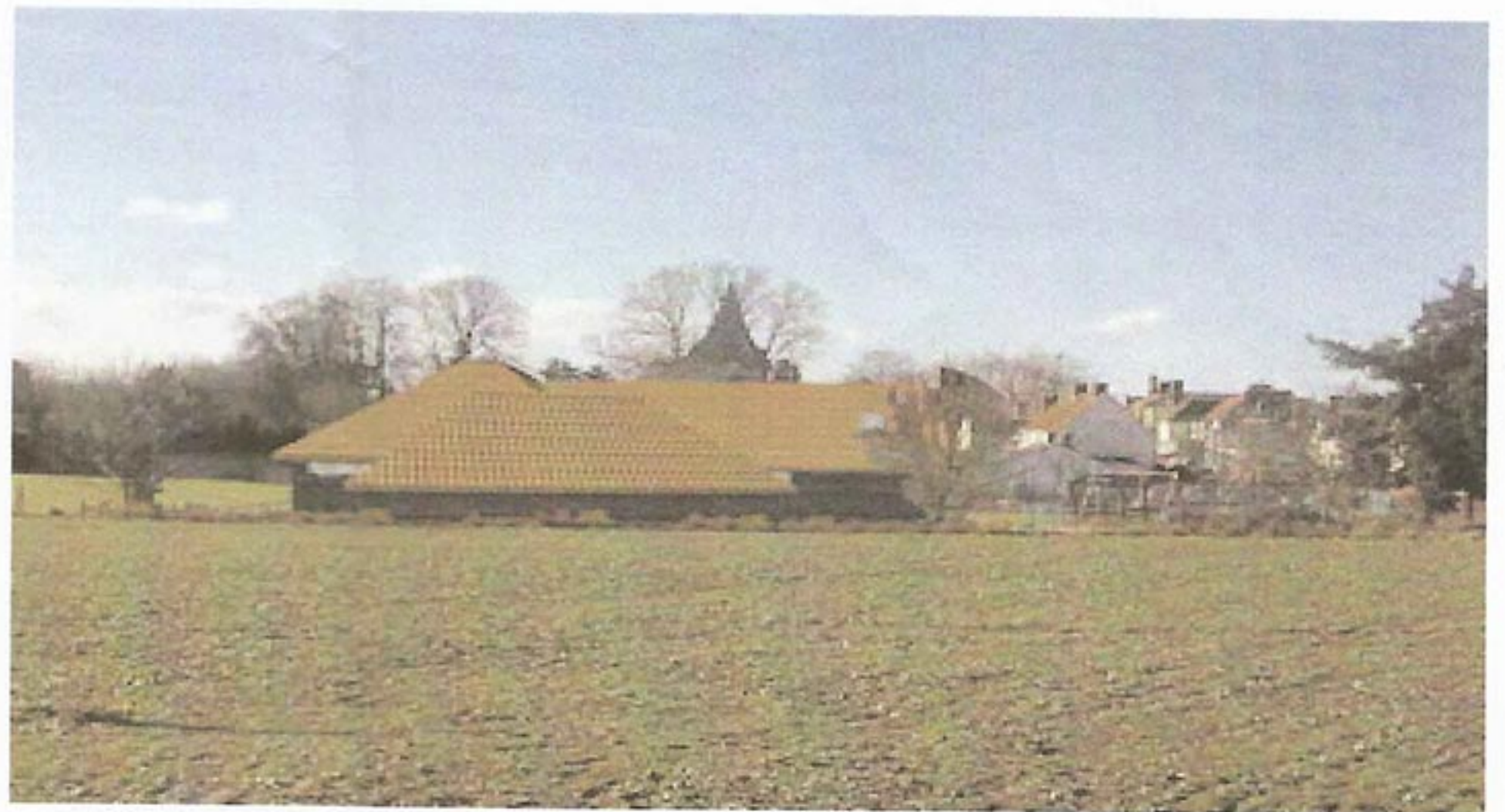
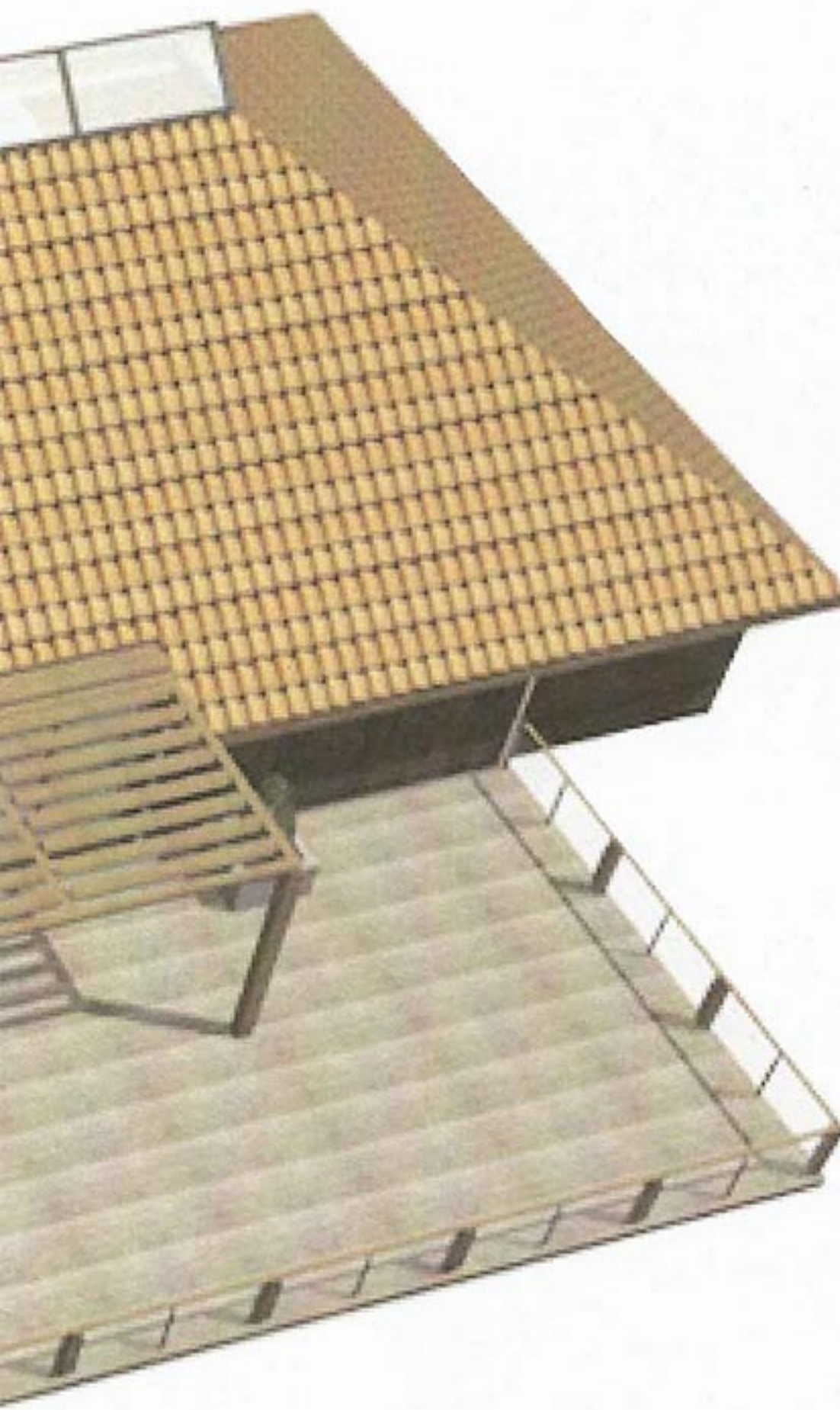
Below: Cut-away of the main activity area featuring the split level office and storage space



Below: Simulated view from the eastern approach to the village
Bottom: Simulated view from the road looking in an easterly direction

Central spread: Aerial view showing the T-Bar design with the main services (Changing rooms, showers, toilets etc;) to the rear

Bottom of double page: Simulated panoramic view from the south showing the new pavilion and storage outbuilding.



How you can help!

To begin with the DFPFA have set up a special Pavilion Fund bank account into which any contributions can be made.

You can contribute by:

- writing a cheque made payable to:

Derek Flannery Playing Field Association

or by online transfer:

Sort code: **40-52-40**

Account No. **00018015**

- leaving a donation (cash or cheques accepted) at the drop boxes to be found at either the Wethersfield Post Office, the Wethersfield Club or Tilbrooks Garage

- offering your skilled or unskilled help on the site of the new building.

- writing to express your support of the planning application to:

Planning Service

Causeway House

Braintree, Essex CM7 9HB

An opportunity to pledge your help in any way will be available at the public meeting taking place on :

**21st March, 10.00am - 3.00pm
at the Village Hall.**

Contact Us!

If you cannot attend the public meeting or you simply wish to know more about this project you are welcome to contact the following team members who will be happy to visit you with the plans:

Jerry Wells (01371 85172)

Helen Finbow (01371 850979)

John Pearce (01371 851019)

Bill Norman (01371 851094)

Project Outline schedule and other key dates

23rd February	Planning application submitted*
21st March	Public Meeting at the Village Hall (10.00am - 3.00pm)
12th May	Official closing date for Essex Environment Trust funding application
19th May	Presentation of project to EET panel
11th July	Wethersfield Fun Day
Early July (not yet confirmed)	Official announcement of EET prizewinners
Spring 2010	Begin demolition and construction
Autumn 2010	Completion of new building

*The full planning application can be accessed on line at the following web address:
<http://www.braintree.gov.uk/Braintree/planning/Development+Control/View+Planning/Planning+application+number:09/00242/FUL>

Our Bill gets recognition for services to the community



Against stiff competition, Wethersfield's Bill Norman has been recognised with the Braintree District Council's Community Achievement Award as the person found by the judges to have made the most valuable contribution to the community or a voluntary organisation.

As the driving force behind the Playing Field Association for many years we can all be very proud of

Bill's achievement. He received his award at a special Civil Reception in January at Gosfield Hall from Lady Newton, Leader of the Council and Cabinet Member Councillor Beavis. The citation acknowledged not just Bill's work for the playing field but also the Parish Council, Village Hall, Fitch & Mott Charity and general support to people of the community. Well done Bill!