

WETHERSFIELD

BLACKMORE END & BEAZLEY END

NEWS

July 2004

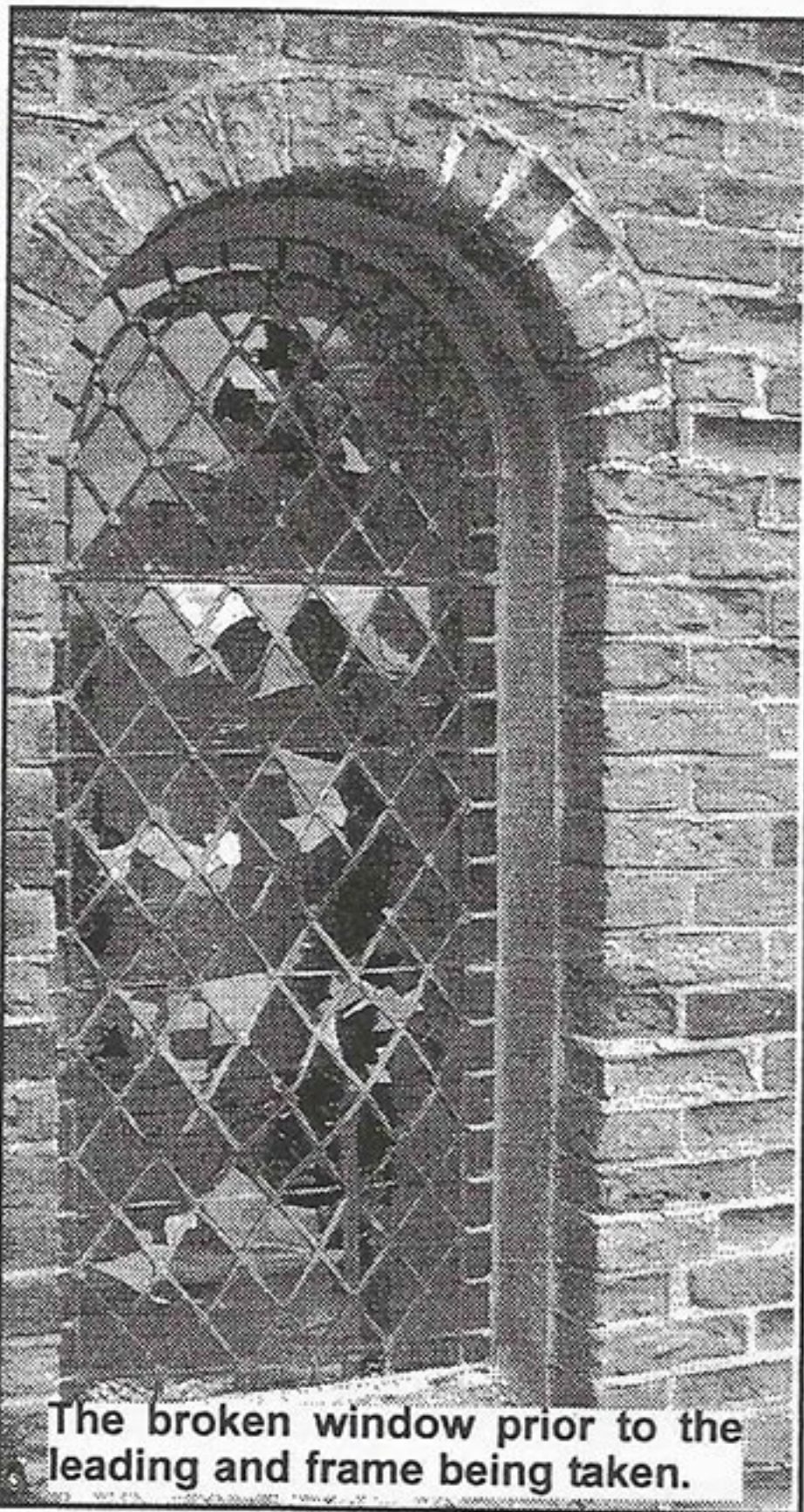
news@ChurchHillHouse.co.uk

Smash and Grab

On the afternoon of Sunday 20th June, whilst Wethersfield Parish Church was full of singers celebrating Wedding music, some antisocial individual decided it was a good time to carry out a bit of destruction.

Using a handy piece of wood they managed to smash as much of the recently restored leaded light window in the back porch of the church as they could manage.

It is believed that the culprit was a minor. As can be seen from the photo, he did not manage to quite reach the uppermost panes.



The police, on inspecting the damage, commented that unfortunately this sort of mindless damage was on the increase and it is known that recently in Finchingfield all the bottles of milk on doorsteps were smashed. Given that milk was delivered at 3am, this suggests that the culprits were out all night.

The police suggested that it might be better to remove the window entirely.

However, on the night of Wednesday 6th July, someone decided that complete removal of the window was indeed a good idea. By Thursday morning all the lead, complete with bronze frame, had been grabbed from the masonry surround. Given that there was torrential rain all that night, the individual must have been pretty determined.

The mystery deepened when a phantom cleaner removed all the broken glass and plaster debris prior to the police arriving. The Church Wardens would like this person to step forward - they are always short of cleaners for the Church!

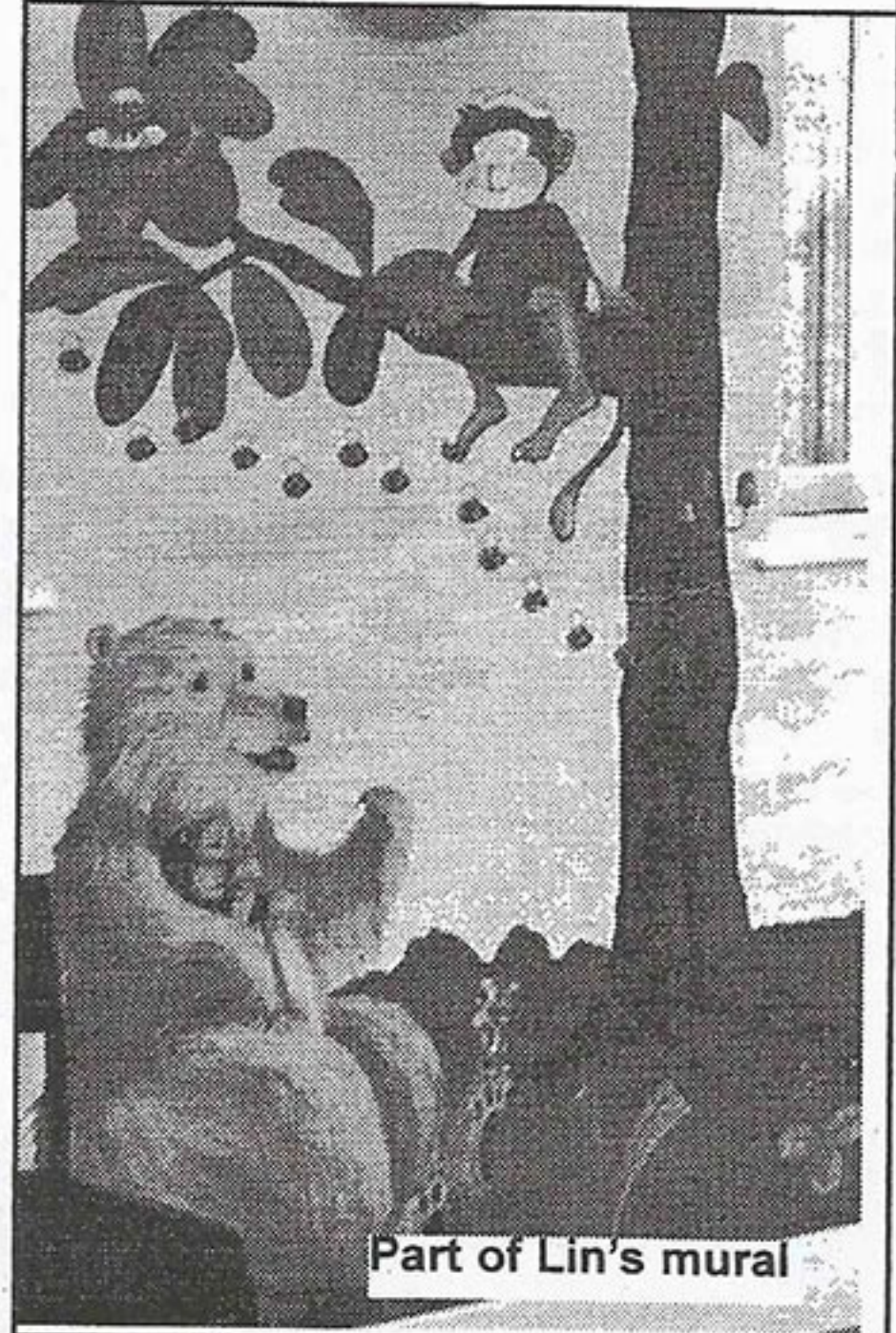
The lead and bronze were found later, discarded in undergrowth in the Churchyard. The thief must have cut their hands on the remaining glass and someone must know about that.

The window had only just been replaced, having been smashed before, just prior to the recent phase of restoration, costing over £86,000. The Bishop of Chelmsford preached at a Service of Thanksgiving for the work in April.

Anyone who may have spotted anything suspicious is asked to contact Braintree police, on 01376 551312 or anonymously by contacting Crimestoppers on 0800 55511

Who Painted The Waiting Room Mural?

Lin Rogers, an artist who specialises in murals and various paint techniques, offered as a present to the local community to brighten up the Freshwell Health Centre waiting room. This gift, a light-hearted jungle scene primarily aimed at children visiting the centre, has proved popular with everyone, judging by the comments. Anita Clapson, the Practice Manager reports that the doctors and staff are most grateful to Lin for providing a bright and breezy addition to the premises for them, the patients and visitors. For more information Lin can be contacted on 01371 850345.



Broadband Launch

Many thanks are due to all those who responded to the campaign carried in this newspaper and the wide area leaflet drop carried out by a small number of broadband enthusiasts, by registering their interest in broadband on the campaign website.

In late March we reached the required 350 registrations to trigger BT into upgrading the Shalford Green telephone exchange to support broadband to all those in the area.

In fact we reached the trigger point just before BT withdrew the scheme, so we were just in time to beat the deadline.

BT has announced that the date at which broadband will be available in the area in **August 18th**. After that date you simply have to sign up with the broadband ISP of your choice and there is plenty of choice, competition tending to bring down prices

or force the inclusion of free modem and no connection charges. Most packages include for always-on access, but watch out for any limitations on how many Gbyte of data (or music!) you can download per month. You will also need a broadband modem and phone filter/s, which the ISP can provide, often free.

There are dozens of ISPs to choose from, starting with entry level Tiscali at £15.99 a month for 150Kbit/s speed (some do not regard this as real broadband!) and another popular one, Wanadoo £17.99 for 512kbit/s, representing a speed ten times your current dial up mode. Others which come out well in comparative surveys are Elclipse, Nildram and Zen. For guidance it is well worth looking at www.ADSLguide.org.uk, where a comprehensive list is available and it is possible to carry out comparisons between any two ISPs.

Just to remind you of the benefits of

broadband - up to of ten times the current speed of access to web pages, multimedia and email as well as simultaneous availability of normal phone service on the single BT line. You can stay permanently connected to the broadband service, but it is vitally important to make sure you have good anti-virus and firewall protection.

SEPT/OCT DEADLINE IS SEPT 1st

We are always looking for ideas for articles, especially written ones.

News@ChurchHillHouse.co.uk

Letters and comments are welcome, but please note that they will not be used unless name and address is supplied. This information will not be published unless the writer wishes.

Latest version of this newspaper, often with photos in colour is also available on: www.wethersfield-essex.co.uk

Parish Plan Gets a Start

OPEN meetings were held in Blackmore End and Wethersfield at the beginning of May with the objective of getting the views of parishioners on their likes, dislikes and concerns about life in the Parish. The meetings were chaired by Jan Cole from the Rural Community Council of Essex. Jan was encouraged by the turnout for the meetings - 22 for Blackmore End and 43 for Wethersfield, even though this represents only 5.5% of the total 1200 Parish headcount. However, ALL will get the chance to express their views when questionnaires are distributed later this year.

In fact the idea behind the open meetings was to get ideas for the sort of questions that needed to be asked on the questionnaires. Jan's approach to the workshops was to get people working in groups and to put comments on 'Post-it stickers' under categories of 'problems', 'opportunities' and 'specials' onto boards with headings such as Housing, Health, Safety & Crime, Transport & Traffic, Local Economy.

Certain issues came up as priorities, with the highest number of stickers mentioning them:

Blackmore/Beasley End

24 - Motorbikes on byways - introduce 'No Winter' rule on byways.

19 - Heavy traffic and pit lorries

13 - Speeding traffic

6 - Flooding & ditch clearing

6 - Need for more recycling facilities

5 - Affordable property for first time buyers

Wethersfield

16 - Improvements to bus service

16 - Speeding traffic

16 - Post Office valued - fear of losing it.

12 - Bench to be put back in bus stop

11 - Community spirit valued

10 - Wethersfield News valued

10 - Need for community housing and shared ownership schemes

10 - Skate park wanted

9 - Primary School valued

8 - Place for playing music wanted

8 - Lack of facilities for young people

9 - Improvements for the playing field (with proposal)

Apart from the above there were many positive comments. A full copy of the reports is available by email to News@ChurchHillHouse.co.uk. Volunteers from the meetings are now organised into working groups to move things forward.

An anonymous survey of age of those attending the workshops revealed that at Blackmore End 11 were 45-59 and 11 were 60-74. In Wethersfield 9 were 11-18, 2 were 25-44, 10 were 45-55, and 22 were over 60. There was roughly 50% male/female split.

Clearly a much more representative view will be obtained from the questionnaires and this will feed into the Parish Plan.

A Parish Plan could be used to influence the thinking of Braintree District Council on planning and funding issues and would greatly ease the ability to get grants, for example for such items as the recently improved basketball pad, funded from efforts by the Playing Field Committee. As well as containing the views of parishioners, the plan would contain useful information such as traffic/road usage, what numbers of people commute and where, how many work locally, number of dwellings, local businesses and so on.



The Wethersfield Meeting

Gower Houses

There is currently a vacancy for a single elderly person, ideally with some connection with the Parish and capable of caring for themselves. Application should be made to Mr. John Sheldrake, Parish Clerk on 01787 223217

GARDEN PARTY

in aid of Wethersfield Parish Church
on the afternoon of Sat. 21st August
at
Wethersfield Hall
by
kind permission of Mr Mrs R. Smith

Legal Update
by Philippa Jerram of Smith
Law Partnership
www.slpsolicitors.co.uk

The government is determined to make the conveyancing process completely electronic within the next ten years or so. As part of this process the Land Registry now no longer issues a land certificate (which you had if there was no mortgage on your property) or a charge certificate (which applied if you had a mortgage).

Usually, these certificates had to be produced every time you sold or mortgaged your house. Now the Land Registry only issue a copy of the entries when you buy a new property, and do not issue a formal certificate. So there is nothing to produce when you want to sell!

If you are a home-owner it would be wise to make sure that the Land Registry has your current address. This will normally be the case where you live in the property, but where you rent out or own a separate piece of land it is essential that the Land Registry knows where to contact you in case someone tries to register an interest over your property.

Because of changes to the Land Registry rules, it may be sensible for people who own property where the title is still unregistered to apply for registration. This will help safeguard your property from having ownership registered by another party.

Ed's note: You can obtain a copy of the Land Registry entry for your property by going to www.landregisteronline.gov.uk. You will need a valid email address and credit card. It costs currently £2 for the Register and £2 for the Title Plan. If you do not have a PC at home, you can log on at Braintree library.

What's On?

FLORAL ART CLUB

Wed July 28th - Summer Lunch at Little Barham 12.30 Raffle Entrance £5 pp

Sat Aug 29th Afternoon Tea - Mansard Cottage. raffle, Bring & Buy £3 2.30pm

Wed Sept 29th Jean Crain NAFFAF Demonstrator

WETHERSFIELD HISTORY GROUP

Sept 9th - The 19th Century Silk Industry in Essex by David Possee 8pm Village Hall

Oct 14th - The Earls of Oxford and Hedingham Castle. Sylvia Horder in the costume of Empress Matilda 1141

Wethersfield Club

An excellent venue to meet with friends. New members welcome. Membership £12pa Available for private functions

Entertainment 2004

July 24th Summer Party night - Live Music (band tbc)

August 7th Quiz Night (8.45pm start)

August 28th Birthday Party (21st)

September 11th Live Music (band tbc)

September 25th Karaoke with Greg

Guests & Non Members £2 on entertainment nights Members Free

All Welcome

Dates, times and artists may be subject to change - see club noticeboard

WETHERSFIELD PARISH COUNCIL - Note from June Meeting

Complaints have been made regarding the length of time that traffic lights have been in place for the hazardous wall in Wethersfield on the Braintree Road. The Parish Clerk, in response to enquiries, reported that a letter has been received indicating that the delay in rebuilding the wall is due to issues connected with listed building regulations and is currently with the Secretary of State awaiting resolution.

Unfortunately other notes have had to be held over to next issue due to lack of space.

PARISH CHURCH SERVICES

July

18th - 11am Parish Eucharist
25th - Evensong

August

1st - 9.30am Holy Communion
8th - 11am Family Service
15th 11am Parish Eucharist
22nd 11am **Finchingfield**

Special Eucharist Service with the Bishop of Colchester

22nd 6.30pm Evensong

29th 11am United Benefice Eucharist
September

12th 11am **Harvest Thanksgiving**
special family Service

(11th Saturday 10am-6pm Sponsored Cycle Ride sponsor forms and details from Sarah Pilgrim 850781)

WELCOME GROUP

5th Aug Barbecue at URC, 7 pm
Raffle, brainteasers etc. 50p open to all, but please ring Jean Murphy 851147 for catering

2nd Sept Slide talk by Ros Munroe - The Way of St James - a Spanish Trek. 8pm

7th Oct Essex Fire Authority - Safety in the Home

WINE CLUB

Sat Aug 16th - afternoon barbecue at Little Barham.

Sept 4th - Afternoon cruise on River Deben

Oct 10th - Wine talk & tasting by Brian Wilks

Jessie Threadgold's
ANNUAL YOUTH CONCERT

Saturday 4th September 6.30pm
in Wethersfield Parish Church

Don't miss it

NEW FARLEIGH HOSPICE FUND

The recent Coffee Morning in the URC raised £400. Many thanks to all.

OPEN GARDENS

This Wethersfield Sunday event raised £170 for the Parish Church Fund. Many thanks to all who participated.

Wethersfield CE Primary School News - Spring Term

Staffing - We were pleased to welcome Miss Alison Clark to our team in January. She has joined us as a Learning Support Assistant working with the Foundation Stage children in Class 1.

ICT - Staff and governors have been working hard to find the best way to solve the ongoing problems that we have had with our classroom computer system. We are delighted that decisions have now been made. When everything is in place (and when the building work is completed), we will have 6 PCs and 8 laptops, all networked together and all with Internet access. This will enable every child to benefit from a system that is both accessible and much more reliable.

We have developed a close working relationship with Tabor High School and Class 3 (Years 5 and 6) has been visiting Tabor for an hour every week to work in one of their ICT suites. This enables the older pupils to be taught effectively on reliable computers and this will ensure that they are best prepared for secondary education in ICT. This provision will continue until our new system is running smoothly and reliably. We are very grateful to Tabor for this arrangement, especially as they are funding our travel costs.

Healthy Schools - We are approaching the end of our first year as a Healthy School and we will soon be assessed on the progress we have made during the year. If successful, we will achieve the Intermediate Award and then we will begin work towards the Advanced Award. A major issue of our current Action Plan is to improve road safety for our children, families and the local community and we were delighted that our recent bid to join the Safer Journeys to School initiative was successful and we are looking forward to the first meeting with a representative from the Local Education Authority. If you are interested in

attending this meeting, please contact the school for details.

Clubs - During the term, children have been able to take part in clubs for Chess, Crafts, Computers, Cooking, Gardening, Multi-Sports, Netball and Recorder.

Swimming - Children have enjoyed weekly swimming lessons at Riverside Pool in Braintree this term.

School Council - The children's School Council organised and ran a very successful Bring and Buy sale to raise funds for new playtime equipment.

Assemblies - The Reverend John Shead has visited us once a week to lead acts of worship.

PTA - Many of you will have enjoyed the recent 'Chocolate Challenge' Quiz which raised some £120 for PTA funds. The Easter Tea was a super event which many of the older and younger members of the community attended and enjoyed. Although not designed to be a fund-raising event, the Easter Tea raised around £125!

Building - We are looking forward to the start of building work in July, as the new classroom and Hall will have such a positive impact on school life.
J.D.

A Well-Earned Rest

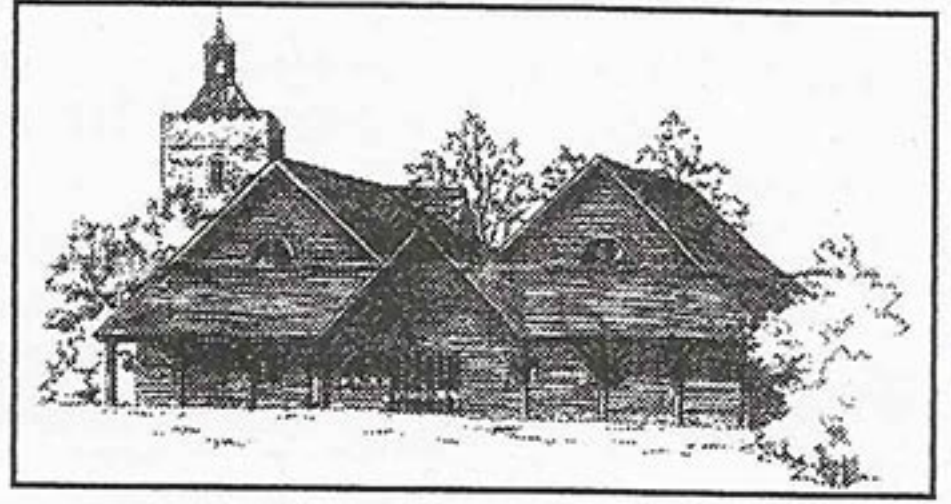
The Rev John Shead has announced his retirement from the United Benefice of Finchingfield, Comish Hall End, Wethersfield and Shalford, with effect from 31st August 2004.

This means that all four Churches will have an Interregnum (defined in the dictionary as a pause or interval between the departure of one vicar and the arrival of the new vicar).

It is expected this interregnum will last probably at least 12 months during which time it will be the responsibility of the Church Wardens and the Parochial Church Council to maintain at least the status quo in the transitional period.

It is the intention to try to follow the existing

Healthy Centre



If you have used the Freshwell Health Centre surgery recently you will have noticed that the car park has been extended, this benefits everyone; this extension was made possible thanks to an anonymous village benefactor. In response Doctors Hildrey, Cutts, Meakin and Salmon and all the team at the Freshwell Health Centre have issued the following statement,

"We never fail to be in awe of this community for its generosity and support to the provision of health care here. The Creamer Fund has grown from strength to strength over the last 12 years and has provided endless equipment for use by needy patients. Another considerable donation from one villager enabled the purchase of the X-Ray unit for the local community by the Creamer Fund; we still believe that this is unique in England. More recently with the support of patients over £900 has been raised for cancer research through the Alan Morement Memorial Fund. We would like to take this opportunity to extend our gratitude and deep respect to you all in this small community."

Over the years the list of equipment purchased by the Fund for the Freshwell Centre ranges from an ECG machine to a digital camera, blood pressure monitors to an Osteoporosis Scanner. The last acquisition was a Heart Probe, which will be used with the recently acquired Ultra Sound Scanner; at present there are over 800 patients who may benefit from these.

The June Car Boot Sale on the extended surgery car park added to the Fund and raised £565.22. The Committee wishes to extend its thanks to everyone who supported this event.

pattern of services, albeit times may have to be adjusted, as we shall be dependant on visiting clergy, and their willingness and ability to travel.

There is an extreme shortage of "spare" clergy, and, as there are several current interregnums, the demand is high.

We shall endeavour to give details each month of the timetable of services via this Newsletter, the Parish Magazine and Notice Boards in the Church,

We request your patience and understanding as to the choice and forms of service we may be forced to make. However it is the intention that there will be a Communion /Eucharist Service in one the Churches in the benefice each Sunday.

If you have any queries please do not hesitate to contact us.

CHURCH WARDENS:

Sarah Pilgrim 850781

Fieldside Lombard St. Finchingfield

Eve Newall 850957

Note requests for baptisms, marriages and funerals should be referred to the above.

People..

The following memories of Wethersfield were emailed from California.

The Tickner family arrived in Wethersfield from North Harrow, London in 1949, from all mod cons (to be had at that time, in the city) to no electricity, no all room heating and no phone. My dad paid £3500 for "Washway" (now Four Bridges), a thatched house about ¼ mile south of Mushroom Farm on the Hedingham Road.

I was 10 and my sister 12 when we were flung into some very basic living. Homework by a pump-up "Tilley" lamp and paraffin wick lamps to light us to bed. The radio was powered by an "accumulator" wet cell battery that had to be recharged at Longs Garage in the village. Heating of the house, if you can call it that, was by a stove in the kitchen. I can still remember going to bed and it was cold enough such that the sheets felt damp! However, I had my crystal radio that could find Radio Luxembourg to keep me warm!

I attended the village Primary school, where Mrs. Walmsley was the Head, cycling the 1 mile each way from and to Washway every day. Hudsons Hill uphill was daunting to a child like me! My sister went to Hedingham School as she was older. I can remember curing the rabbit skins we brought in, having caught them during harvesting and from ferreting.

I was in the church choir as a soprano where Mrs. Craig was the Choir-Mistress. She thought my voice good enough to sing a solo one Easter. The Reverend Shepherd was the vicar at the time and he and Mrs. Shepherd were always a fun people - once Mrs. Shepherd took my bicycle and rode it around the village green because I told her she couldn't make it! (it was a child's bike!). On Sundays, the Vicar always managed to finish the morning service right at noon, when the pub opened. Apparently he was a frequent visitor after the service ended although I don't know as I wasn't old enough! My dad eventually became the Vicars Churchwarden and my sister joined the bellringers (I think because there was a boy in the group that she fancied!). The Reverend Shepherd was a keen sports fan and was involved with the Village Football and Cricket Club. Once a year he would hold a Sportsman Service where famous sports names came and read a lesson. I remember Peter May of Cambridge University and Dickie Dodds of Essex CC came once.

Every Christmas the choir would go around carol singing on a lorry, with a harmonium on it, visiting even some of the most outlying farms. We invariably finished up at the Borthwicks (Colonel, retd) at the Hall(?) to the tune of mince-pies and beer (for the men!).

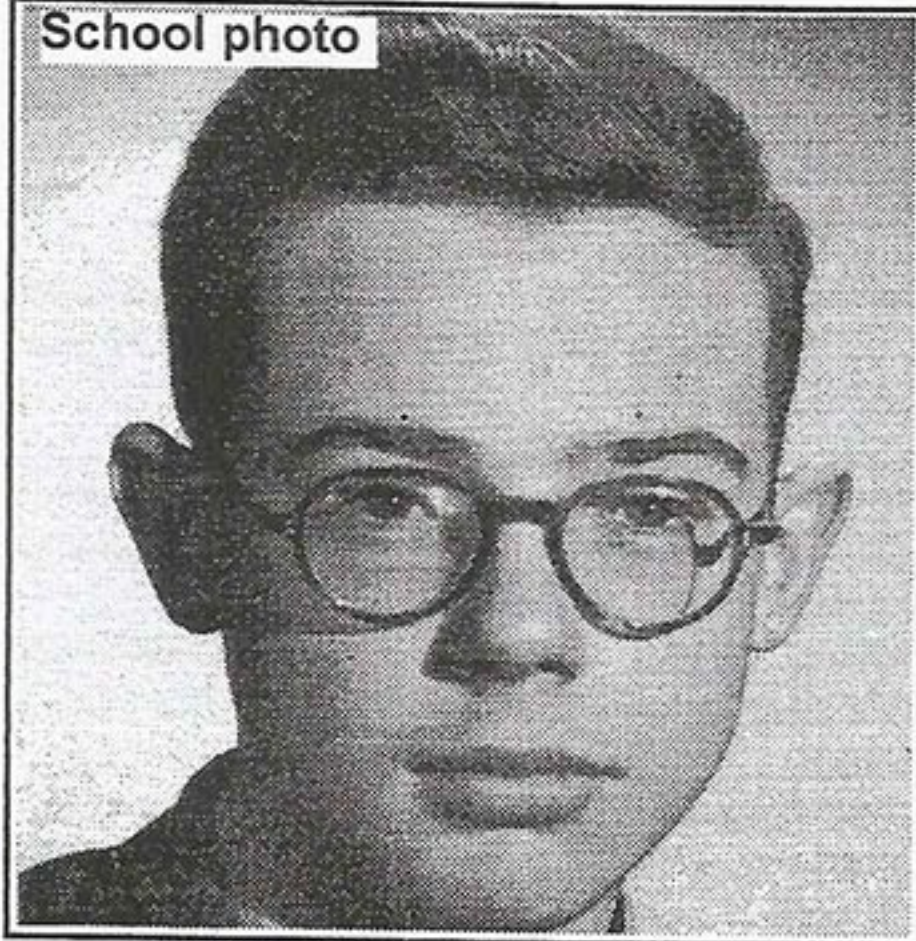
I use to help with delivering the mail at Christmas time so I got to know quite a few people in the village. In those days I figured that if you addressed a letter to: Washway, Wethersfield, England from anywhere in the world it would have got there!

I finally passed the "11 plus" (after 2 goes!) and went off to Braintree County High School catching the "Wiffens" bus at the village. The Wiffens were centered in Finchingfield. I always left my bicycle at the butchers opposite

the Primary School, a Mr. Cauldwell - always a jolly fellow.

I played soccer for the Wethersfield Ambers - the amber & blacks. I started off as linesman, and then, as they couldn't get enough players, I made it to the team. I wasn't as good as the men, obviously, but I had speed. They put me on the wing, and come the second half they were continually passing the ball and telling me to run - I later figured it was because they were tired by then! I did have one moment of glory, however. If I remember correctly, we were about to get relegated and needed a draw in the last match. Late in the 2nd half and trailing 2 -1 I centered from the right and we equalised. I was the hero! Also, during the season, there was one away fixture they all looked forward to and I couldn't think why because they always beat us. Turned out that the changing room was in a pub and it opened early for the teams after the match!! We sometimes had bizarre scores - like 9-7 vs Belchamps! Then there was poor young (old to me) Dennis Broyd, who went home and burned his boots after many missed goals!

School photo



I also played cricket for Wethersfield. Here again, I started off lowly, as scorer (so, I was pretty good at mathematics!). And also, there weren't enough adults to form a team some of the time - I batted number eleven and didn't bowl!!! Longstop was my position - I guess running was my main attribute.

I don't know how many people still living in Wethersfield still remember the Village Fete that was held at the Manor every year (?). Bowling for the pig and clock golf are in my memories. Sir Harold always welcomed the occasion and it was a wonderful affair.

My memories of Wethersfield will always stay with me and be amongst my favourite memories, probably because of my whist full youth.

I cannot stop without mentioning:

Heather & Fred Marshall - from the choir. Heather was a particular friend of our family.

Aunt Lil in the Almshouses that secretly gave up sips of her orange wine - wonder how much proof that stuff was!!

Gathering round the TV that was set up in the Village Hall to see the 1953 Coronation. The Whist Drives there and the dances.

Dr. Lasbury, the village doctor, that came to see you!

The Langleys (bakery), up the hill, opposite the Post Office.

The Broyds, the Rusts, and the Reynolds. And the Laurences of Hudsons Hill.

Snowball fights with the new village consta-

ble - we had him cornered in Longs Garage driveway!

And learning to drive on the then disused airfield - if you turn the wheel at 35mph in an Austin 7 there's a good chance you might turn over!

Oh, and 3d haircuts in a barn at Blackmore End!

So the kid that went to America, and during his career was awarded the NASA Exceptional Achievement Medal, respectfully thanks Wethersfield for his formative years. I will always remember them.

Thankyou to you all. Michael Tickner

BLACKMORE END VILLAGE

(Blackmore End Village Hall Committee)

FETE/FUNDAY

SATURDAY 17TH. JULY 2004.

We are throwing down the gauntlet or more appropriately the ROUNDERS BAT.

The Ends of Blackmore, Beazely and Rotten would like to challenge Wethersfield to a Rounders Match on the 17th July 2004.

Several teams may compete. Each team must consist of a minimum of 9 players of varying ages, of whom there must be at least one person aged 10 or under and one or more over 65. This event will take place as part of our Fete/Fun Day and it would be great if we could have several teams entering from around the parish.

We shall have the usual refreshments, namely the Bar, Tea and Cakes Tent and a Barbecue. Also the popular games, Tombola, Plants, Cakes and Book Stalls.

Please put this date in your diaries and come along and have fun!!

Please let me know if you are interested in forming a team and telephone Adrienne on (01371)851340

or adrienne.p@ukonline.co.uk

Wethersfield Parish Church ACTIVITY WEEK

Wethersfield Playing Field Pavilion
9.30am-12.30pm Admission £1

Mon 26th & Wed 28th July, 7 - 11 yr olds
Tues 27th & Thurs 29th July, 3 - 6 yr olds
Fri 30th July, all children

Sun 1st Aug - special service, with display and presentation of work, in Church at 3pm

Art, craft, games, songs, competitions etc.
This year's theme -

'All Creatures Great and Small'

Contacts: Sarah Pilgrim 850781

Elaine Ambrose 850244

GARDEN CLUB

Sun 8th Aug - Garden Party at Jack Tillbrook's 3pm-5pm

Fri 17 Sep Herbs and their Uses by John Webster from Herbal Heaven

Fri 15 Oct Using Clematis Oviatt Hamm