

WETHERSFIELD

BLACKMORE END & BEAZLEY END

NEWS

May/June 2003

news@churchhillhouse.co.uk

Wethersfield gets webwise

HAVE you ever heard of the great Mushroom scandal? - or wondered about the connection of the Bronte family with Wethersfield? Perhaps you did not know about the 50 year connection of the USAF with Wethersfield or the adventures of the gallant Captain Clerke, who was born at Brook Farm.

Well, these and other historic tales can be read about on a new Wethersfield web site developed by Derek Norman, producer of the Wethersfield News for it's first 10 years.

Derek stresses that the website is not intended to be a history of the village but to give anyone who wishes a chance to dip into life in Wethersfield over the

years. It's liberally illustrated with both current and historic photos.

It should provide interest for Parish folk and their friends and relatives, perhaps living at a distance or even abroad. It's also good for newcomers to the area.

Particularly it may interest visitors from the United States with which the village has close associations.

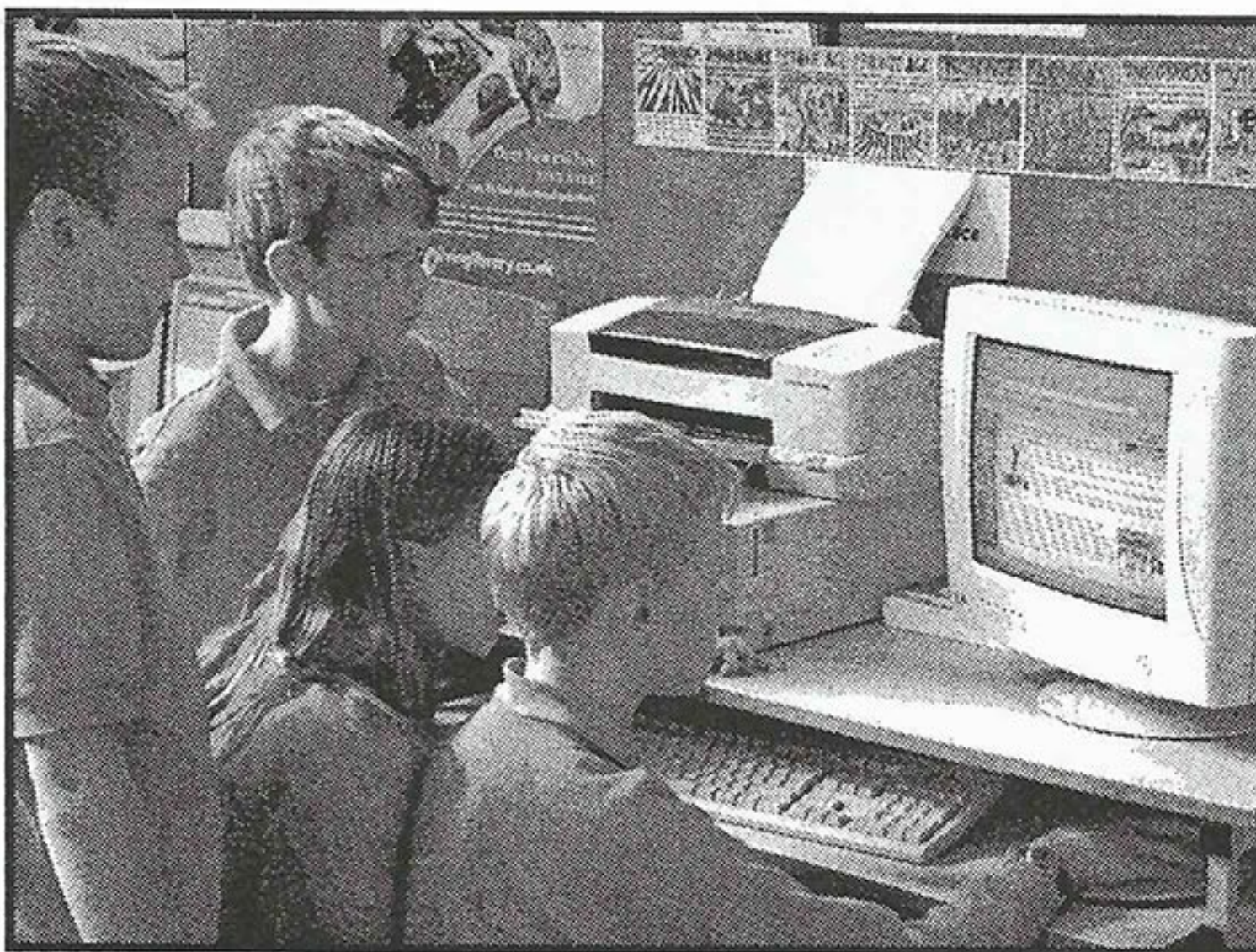
People from Wethersfield were among those emigrating to New England at the time of the Pilgrim Fathers and other Wethersfields are found in Connecticut and western New York State. From 1941 to 1946 the traffic was in the other direction as USAF personnel arrived at RAF Wethersfield in the second world war.

You can find the web site at www.wethersfield-essex.co.uk.

You can even read the latest issue of Wethersfield news on the site.

Derek pointed out that some of the pages are still "under construction", but he is working on completing the site very soon. He recently gave a talk to Wethersfield schoolchildren on being a journalist for their Writing Week and showed them how to access information on the website.

For those who haven't got a computer at home and might feel 'left out', remember that one hour a day web and email sessions can be booked at all local libraries. If you are a bit nervous, friendly staff are at hand and details of more formal training sessions are available.



Children at Wethersfield Primary School check out the new Wethersfield website.

For more advanced users, John Lefever of West Drive reminds people in this area to register their interest in broadband internet connection at BT web site:

www.bt.com/btbroadband/register/ns_register_intro.jsp
The Exchange at Shalford Green has up to 49% of people registering their vote. BT will only upgrade the exchange when it reaches 100% target registration. This corresponds to a target vote of 250 - we only need 125 more votes.

Good luck with your surfing.

Can you make it a fun day?

AFTER the success of last year's Jubilee Fun Day in Wethersfield, the Playing Field Committee decided that to try to repeat the usual Fun Day format would be somewhat of an anticlimax.

However, it is hoped that certain other events, such as the Fun Run and Boot Sale will be possible.

The Playing Field Committee was pleased to get approval for funding from Awards for All (National Lottery) for improvements to the volley-ball area and also towards tennis coaching.

They are now looking for a new person to come forward to 'champion' the Fun Day - perhaps in a new format?

At Blackmore it's a day for Knights

BLACKMORE END this year is returning to the very popular Mediaeval Fayre format on July 19.

The Knights of Chivalry will be entertaining the crowds with their Battle re-enactments in the afternoon and a Ladies Morris Dance group will be putting on a show.

The usual side shows, games, produce and cake stalls, teas and refreshment tent, bar, pig roast and barbecue. Exhibitions will be in the Village Hall.

The organisers hope you will come in mediaeval or fancy dress and bring along cakes and produce, bottles, tins and gifts for the tombola. But most of all - be there!

The fair starts at 1pm on Blackmore End Village Playing Field Entrance by programme £1.50; children 50p Proceeds to aid the Blackmore End Village Hall fund.

Happenings...

WETHERSFIELD GARDEN CLUB.

June 20 . Talk on Hardy Ferns by Margaret Nimmo-Smith. Ferns are becoming increasingly popular again - so useful for that odd shady spot.

July 19 Garden Party at St Georges House, home of Penny Payne. Come and support this popular event. Guests are welcome at all our meetings, held in the village hall at 7.45pm

THE CREAMER FUND.

We would like to thank all those who donated prizes and/or supported the Easter raffle. This raised £1,348.

The A.G.M. has taken place. All existing trustees were returned and there was no change to the Officer placements. A new post of Fund Raising Co-ordinator was introduced, and this fell to the lady you can reach on 851147 if you have any queries.

June 1 sees a garden open in Great Bardfield under the open gardens scheme, and the Creamer Fund will do the refreshments here. Many more events are planned for the summer - watch for the posters.

A very successful coffee evening took place in Great Bardfield.

A payment of £3,597.89. being running costs for the X-Ray Machine has been made, and we are one step nearer to the echocardiogram and hopeful visions of a new ultra sound scanner is in the queue.

CONTACT: Jean Murphy 851147

WETHERSFIELD PARISH CHURCH

Sunday, June 15 proud owners will open their Gardens between 2pm and 5pm to share the pleasure of their gardens with visitors. We hope the weather will be kind and that many of you will enjoy an afternoon out.

Sunday, June 22 at 6.30 pm the Bishop of Colchester will be at the Church to make two dedications, firstly the gates, provided from funds raised by Friends of the Church and secondly to dedicate a Memorial Book donated by Sue Bennett in memory of her husband Keith. Please come and join in this special service.

Sunday, June 29 the Threadgold family have invited us back to Boydells for a Unity Picnic at 5.30 pm with our friends from the United Reform Church. Bring your own picnic food - drinks fun and games supplied !!

Saturday, July 26(afternoon) by kind permission of Mr and Mrs Smith of Wethersfield Hall we will be hosting a Garden Party in the grounds. We are very much looking forward to this event and to seeing you there in support of the Church.

WELCOME GROUP As our usual meeting place was being used for voting on 1st May, we went for a guided tour of Dunmow Museum and Mailings. Several of their members gave us a very warm welcome, and shared their enthusiasm with us, resulting in a very happy evenings

June 5, P.C. Geoff Butler - Crime Prevention Officer will give a short talk, and then open up

the discussion. If you have something to say, this is your chance.

July 3 Rev. Ken Ellis will give a talk with slides entitled "Reflections on The Holy Land". Our meetings are held in The United Reformed Church Hall at 8p.m
Subs are 50p to include refreshments, open to all - we look forward to seeing you.

CONTACT: Jean Murphy 851147

WETHERSFIELD PRE-SCHOOL

Open Mon., Wed., Thurs., Fri., 9.30 - 1.30 during term time. Phone 850016. We still have a few places available.

The children enjoyed an Easter talk by Nigel Warner, Minister of the URC, and also an Easter egg hunt.

Events coming up in June are a trip to Boydells Farm, a visit to Thomas the tank Engine, Victorian Style photos and we finish the term with a Teddy Bears Picnic.

LOCAL HISTORY GROUP

June 12 (Thursday) Visit to Braintree Museum "Victorian Experience" £3.75 includes tour, visit to classroom and refreshments. Meet at 7.20 at the Museum Shop. Contact Leslie Nicks on 850624 by

June 1st.

No meeting in July or August.

BRITISH LEGION

On behalf of the Local Branch, Peter Morton, Hon Secretary, wishes to thank all those who took part in and contributed to the recent very successful jumble sale. £315 was raised for branch welfare funds.

BROWNIES and RAINBOWS

recommences after half term on Tuesday 3rd June

BUSY FINGERS HANDICRAFT GROUP

Meets on the 1st & 3rd Tuesday of each month in Blackmore End Village Hall 8-10pm.

June 3 and 17-Tailored Lampshades - Janet Hitchings

July 1 and 15 Patchwork cushion - Janet Hitchings

CONTACT: Paulette Bauckham 850308

WETHERSFIELD PATHFINDERS

Meets on Wethersfield Green at 10.30am on June 22 and July 27 for approx. 2 hour walks Everyone welcome including dogs.

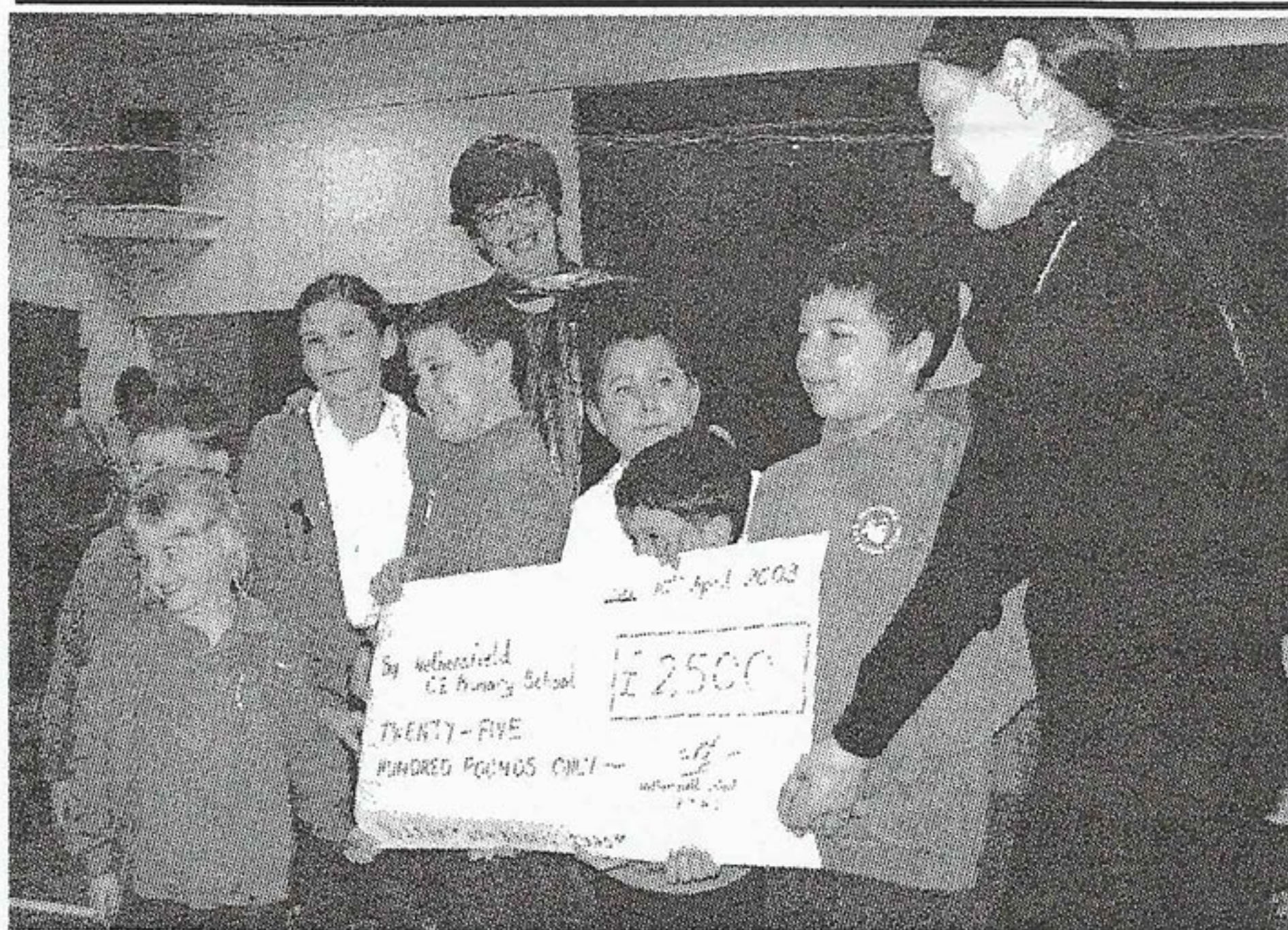
WETHERSFIELD WINE CLUB

June 13 - American Theme Evening

July 12 (Sat) - Boules!

Guests and new members welcome

CONTACT John Pye 01376 326 784



WETHERSFIELD PRIMARY SCHOOL PTA held their Easter Tea at the end of last term, which was a great success and well supported by the community. This event managed to raise a profit of £150.

The pupils were invited to take part in various competitions, and we had a fantastic response, thank you to everyone who took part.

We would like to congratulate the following prize winners:

Jack Hubbard, Esther Pilgrim and Jamie Worsfold for their Easter hats

Phillippa Hollis Esther Pilgrim and Matthew Jerram for their Easter gardens

and finally to Jack Holliday, Bradley Cockerel and Rhea Paparestis-Stacey for their decorated eggs.

This event was made extra special this year as we came to the end of our fund-raising for the Information Technology Suite. Way back in February 2002 the PTA were approached by the School and governors to embark on raising funds to equip this new room. The estimated cost would be £5000. The PTA were asked to raise the sum of £2500 which would then be matched by Essex County Council. After several successful events and some generous donations the PTA was able to hand over a rather large cheque for £2500 to Mrs Bronwen Ferland (Head teacher).

PARISH COUNCIL NOTES

Council Elections were held at the beginning of May. It turned out that just enough prospective candidates stood for this Parish as were needed to replace those councillors which retired, so voting was not required.

Retirees were:

- Heather Marshall, who has served on the Parish Council for 30 years
- John Nottage served for 41 years (see write-up on this page)
- Wreford Painter - served for 16 years
- Chris McCloud - served for 4 years

New Councillors are:

- Margaret McCloud (Wethersfield Ward)
- Bill Norman (Wethersfield Ward)
- Philip Rawlinson (Beasley End Ward)
- Richard Clubley (Wethersfield Ward)

Those continuing to serve are:

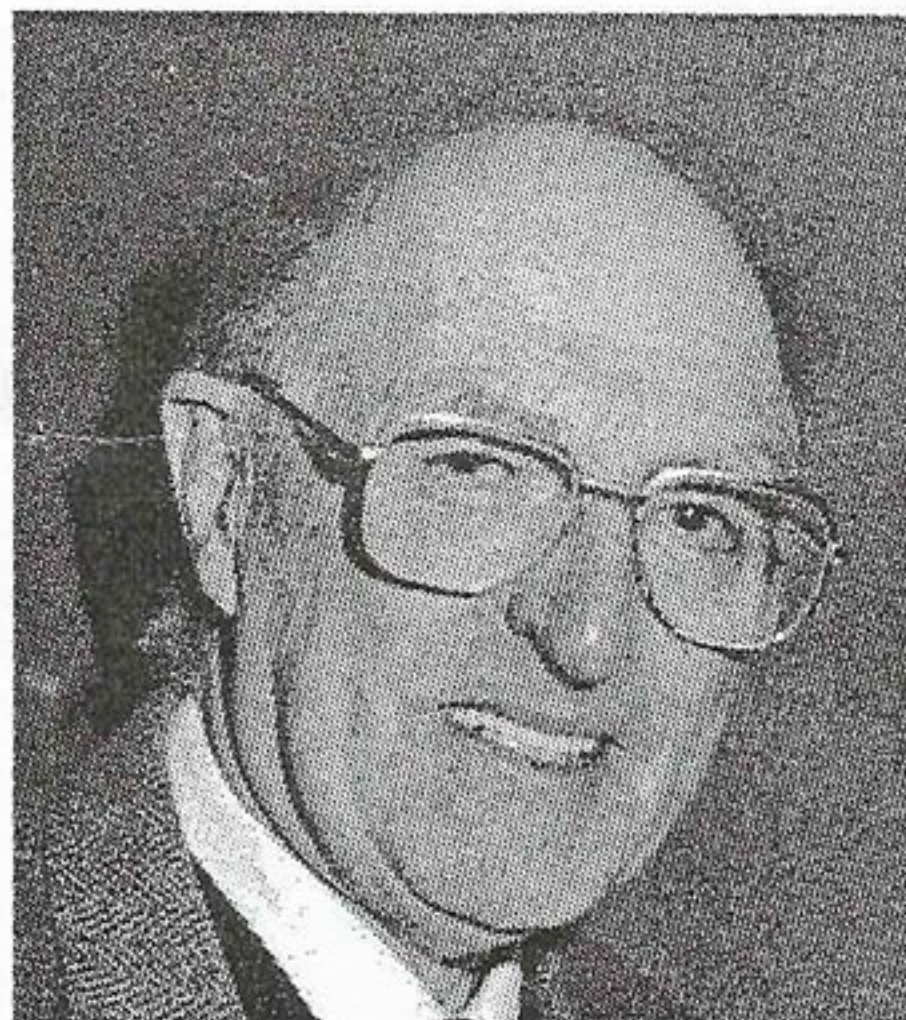
- Linda Demenza (Blackmore End)
- David Foster (Blackmore End)
- Derek Martin (Wethersfield)
- Jack Tillbrook (Wethersfield)
- Bill Wright (Wethersfield)

At the first meeting of the new Council John Sheldrake was confirmed as continuing to serve as Parish Clerk, David Foster as chairman and Bill Wright as Vice/Deputy Chairman.

Alms Houses

The Council are inviting applications for the waiting list for the Gower Trust Alms Houses.

41 years service to the village



John Nottage has served on the Parish Council since 1962. He was Chairman from 1962 to 1995, taking over the role from his brother George. He played a key role in steering through the changeover of the Braintee Rural to District Council.

John has been active in many village activities over the years. His father was a founder member of the Wethersfield Men's Club in 1921, the year of John's birth.

At the AGM a retirement presentation of crystal decanter and bottle of sherry was made to mark his many years of dedication. In addition a bottle of milk was also presented, his fellow council members hedging their bets as to his preferred tipple!

John has commented that he will very much miss the involvement with the District Council.

BLACKMORE END NEWS

The Kitchen in the Village Hall has now been fitted with Oak Kitchen Cupboards, which is a great improvement. This work has been done by volunteers and the kitchen units were kindly donated.. Further improvements are planned.

The long awaited planning permission for the Toilet and Storage extension is coming to fruition and tenders will soon be sought for the building work. Grants will then be required in order to complete the restoration of the fabric of the Village Hall.

Your help in attending fund raising events will enable the Committee to realise this project sooner.

The Committee would like to know what activities YOU would like to see take place in the Hall.

Suggestions please to Committee members. (Adrienne 851340; Harry 850308; Philip 851281; David H.850544, David F. 850852)

CARPET BOWLS CLUB

We are now in a position to be able to ask for new members. The Club has recently acquired new mats and we are all keen to have some friendly competition with neighbouring clubs.

Teams normally consist of three teams of four players but as the club currently consists of fourteen members, it does not allow for holidays or illness.

Blackmore End C.B.C. is a very friendly club and we play in attractive and cosy surroundings in our Village Hall - Friday Nights- 8.00pm until 10.00pm, followed usually by "apres-bowls" in the local Hostelry.

Wethersfield CE Primary School News - Spring Term

ONCE again, the school had a very busy and rewarding term.

■ Reverend Shead has continued to visit the school weekly to lead an Act of Worship.

■ The School Council was set up in January, with elected representatives of each year group meeting fortnightly to discuss school matters. During the term, School Council discussed and decided how to spend a sum of money donated by the family of children who had recently left the school.

■ The school joined the Healthy Schools Initiative, which involves an on-going commitment to improving the health and well-being of everyone within the school community.

■ Tesco computer vouchers have been collected and our target of 10,000 looks within reach - please send us any you have lurking in pockets, purses and wallets!

Unicef was the chosen charity this term. We had a 'Unicef Day' when the children experienced arts, crafts, food and drink from different countries and cultures. Everyone dressed in costumes and we all had a great day, raising £80 for Unicef by making a line of coins around the netball court.

■ The swimming team took part in the Small Schools Gala in February and came second. The football and netball teams played friendly matches against Stisted CE Primary School and Thaxted and we were delighted when the school won the Small Schools' Netball Rally.

■ Multisports, hockey, netball, craft, recorder and Spanish clubs have been well supported and enjoyed by the children.

■ The PTA continued to fundraise on behalf of the school. In February, the PTA organised a sponsored 'Pancake Toss', where all the children were sponsored to

toss a pancake as many times as possible in a minute. Great fun was had by all and the money raised completed the target of £2,500 which the PTA had set towards the new computer suite.

The Easter Tea, in April, involved many parents and lots of older village residents who joined the children for tea, cakes, a raffle and entertainment. The older children chatted with the guests and showed them some of the work that is done in school, then the whole school sang two songs for the guests. Prizes were presented to the children who had won the 'Easter Hat', 'Easter Garden' and 'Decorate an Egg' competitions.

The highlight of the afternoon was the presentation of a cheque for £2,500 by the PTA to the school. (Although this was not a fundraising event, £150 was raised from the raffle and the sale of cakes and refreshments!) **JENNY DUNSTER**

People.....

French Connection at The Castle

The new owners of Castle House in Silver Street, Wethersfield, seem to be maintaining a French connection associated with the house.

About 20 years ago a French lady, Mrs Inworth, ran a Haberdashery shop on the premises, when it was called 'The Spinning Wheel'. She had a huge range of embroidery silks and local memories recall "you could even buy a single button".

The last owners, Dave and Sheila Clements have moved to France - a complex of old buildings in Normandy.

Now Hamish, Bérengère and their young son Gregoire have moved in. Berengere comes from a small village near Chablis, east of Auxerre. She originally came to England as an au pair, to work for 6 months with a family in Scunthorpe. Unfamiliar with Northern ways, she was disturbed and annoyed to be addressed as "Luv" by the driver on her first bus trip!

Hamish is a New Zealander, his emigrating Scottish father being responsible for the name.

Bérengère and Hamish first met at a party in London 14 years ago and, when Beréngère returned to France, kept in touch.

In fact she worked in Marks and Spencer in its early days in France and mentioned "M&S didn't have fitting rooms, which the French were used to, but after they noticed customers stripping off on on the shop floor, they soon changed that policy!"

In '94 Bérengère returned to these shores to join Hamish, who was working near Gloucester. She carried on her retail career with a job as supervisor in the local M&S.

Two years later they decided to emigrate to New Zealand (South Island), but it did not work out and a year later they moved back, this time to jobs in Cardiff, although Hamish had to leave his "beloved

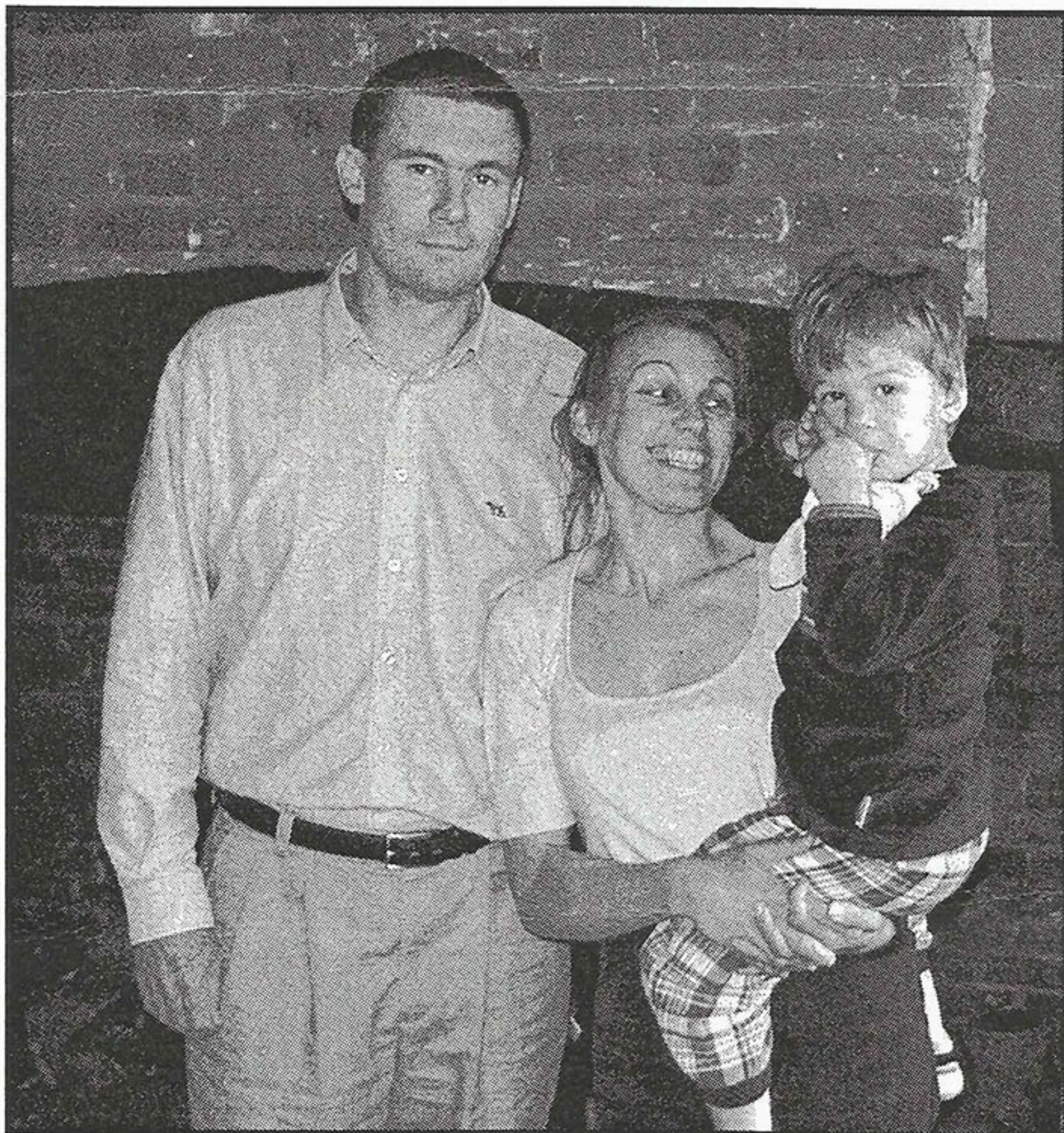
Porsche in NZ! "

Eventually Hamish's employer moved to Essex and the family took a rented house in Ford End, whilst they looked for a more permanent home. Beregere pointed to huge files of estate agents house details, many of which they inspected before settling on Castle House.

As Hamish commented " We've great plans for the house to get it how we want it, but realise its going to take a lot of time and effort" At the moment Hamish is hacking back the undergrowth in the garden to make room for a replacement oil tank, but "plans for the garden will have to wait till next year!"

Meanwhile Gregoire, two and a half years, spends much of his free time with his nose pressed on the front window - "he is fascinated with trucks and cars at the moment." Beréngère generally talks to him in French, keen to keep him bilingual.

So the French theme in Castle House continues.....



Hamish, Bérengère and Gregoire take a break from their renovations!

Are you interested in playing Chess?

Join Wethersfield Chess Club

Tuesday evenings from 7.30

for details ring Paul Smith on 850148 or 07976 786001

PLEASE NOTE THAT JULY AUGUST COPY DEADLINE IS JULY 10th

We are always looking for ideas for articles. Correspondents and editorial volunteers most welcome.

news@churchhillhouse.co.uk

Letter and comments are welcome, but please note that they will not be used unless name and address is supplied. This information will not be published unless the writer wishes.

DISTRIBUTION

After many years of dedication, Roger Leathlean has had to give up his key role of head distributor.

A VOLUNTEER REPLACEMENT IS NEEDED IF WE ARE TO CONTINUE.