

WETHERSFIELD

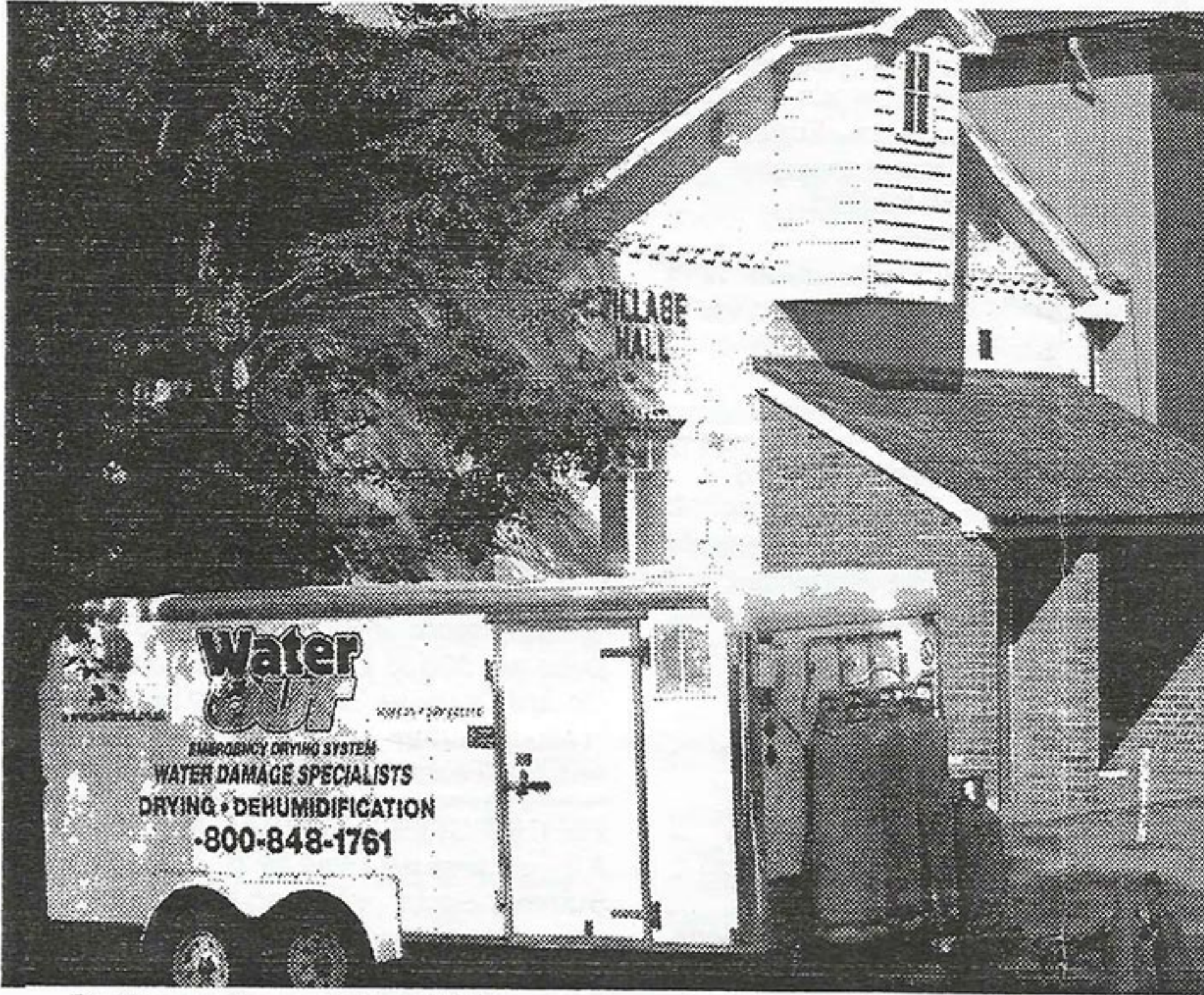
BLACKMORE END & BEAZLEY END

NEWS

September/October 2002

news@churchhillhouse.co.uk

Club hit by climate change ?



Drying out - Dehumidifier pushes drying air down into the Club

FLOODED twice within a year, could Wethersfield 'Mens' Club be the victim of climate change?

Both on August 9th last year and 20th July this year, torrential downpours resulted in flash floods in the pathway outside the club entrance up to 2 feet in depth. In each case, floodwater poured in through the doorway, soaking carpets and fittings with 'foul' water. Most of the huge quantity of water washed off the adjacent playground and car park and, although investigation of the adjacent drains have revealed some blockage by tree roots, it seems that, even with clear drains, the sheer speed and volume of the deluge would have overwhelmed the drainage system.

So it seems the answer is probably to fit a 2-3 foot flood barrier in the club doorway, to be fitted into slots whenever the Club is unoccupied.

Meanwhile the Club is closed on environmental health grounds, pending agreement of reparation costs between the loss adjuster and an independent Agent. It is then hoped to carry out the work and improvements ready for re-opening, hopefully in early December.

Cricket Club Tour Italia

Wethersfield Cricket Club have recently returned from a successful tour in Northern Italy. Captain Jerry Wells had arranged the tour, having previously lived in Italy for many years.

Although not renowned for its cricketing heritage there are a number of cricket teams in Italy mostly consisting of homesick people from cricketing nations working locally.

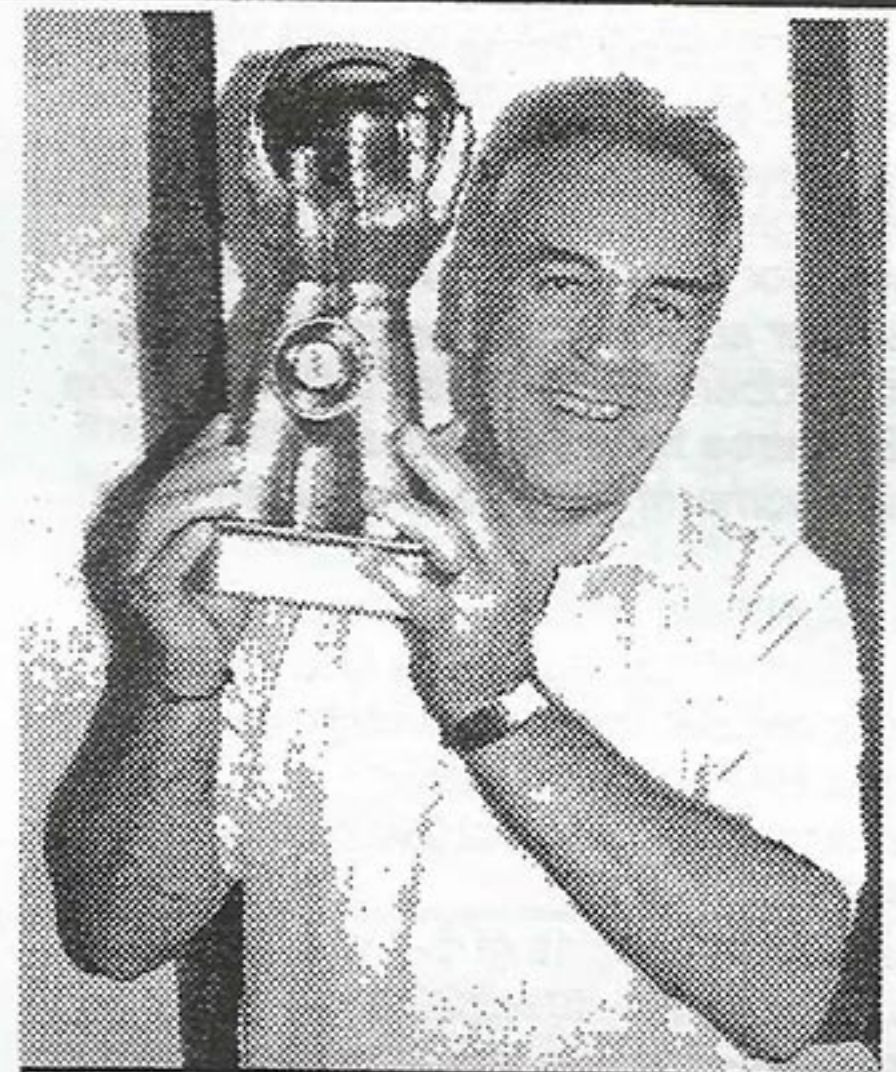
The main purpose of the tour was a memorial game for one of Jerry Wells's ex team-mates against a team of old players from the side that they both used to play for. A second game was also arranged against the current side (Euratom).

Amazingly the entire Wethersfield party managed to navigate all the way to Taino without anyone getting lost or arrested. The only two minor crises were Chris McCloud breaking down and Rob and Eleanor Lambert's ferry

crashing. The sight of a significant part of the village transplanted in Italy was almost surreal, but we soon got into the swing of eating pasta and drinking red wine.

The pitch provided the first problem for Wethersfield and certainly gave the home side some advantage consisting of a carpet laid on top of very thick grass in the middle of a football pitch. The grass had the effect of producing a cushion under the carpet and so the bounce varied between about 2 inches and none at all, this coupled with the very long grass in the outfield made runs difficult to come by.

In the first game for the John Powell Trophy Wethersfield proved too strong for the local team. Jerry Wells showed his local knowledge by batting very effectively on the carpet and with David Holliday to scoring with 38 and the score of 145 from 30 overs was always likely to be too much for Euratom. The



Gerry holding aloft the John Powell Memorial Cup which the team brought back from Italy.

Wethersfield bowling from Howard Wright and Chris McCloud was very

Continued on page 3

Happenings...

TAI CHI CLASSES

It is hoped to start Tai Chi classes at Finchingfield Village Hall on 1st October. Everyone interested should contact: Sheila Ashford on 01371 810535

WETHERSFIELD SCHOOL PTA

The PTA celebrated the end of another academic year in style, by organising an end of term disco for all the pupils of Wethersfield School. This was very well attended, and fun to organise, and a lovely way to say our goodbyes to the year 6 children. We wish them every success in their new schools. The Fund for the new IT Suite, which is part of the new building project that the school is undertaking, has reached £1500.

We would like to thank the Fitch and Mott charity for their very generous donation and also thank everyone who has supported our events. Our AGM will be held on Monday 9th September, when we hope to be able to attract new members.

Our next event will be our Christmas Bazaar, which is to be held on Friday 22nd November, 7pm until 9pm in the village hall. If you wish to have a stall at this event please contact Ann Gibson on 01371 850224 or Davina Spackman on 01371 850351 to obtain a booking form.

RAINBOWS AND BROWNIES

1st Wethersfield Rainbows and Brownies meetings start again on 10th September, following the summer break, with lots to look forward to and enjoy. **Rainbows** - will be continuing their journey through the alphabet, covering the letters M to R between now and half term, and are to get together with other Rainbows in Panfield District for our annual Rainbow Romp on 30th September.

Brownies - are also looking forward to joining girls from other packs in the district for Brownie Revels, to be held this year at Braintree Leisure Centre on 5th October. We are also planning a trip to Braintree for 'The Sound of Music' which some of the girls are taking part in.

As usual both groups will enjoy a selection of games, crafts and activities at our regular meetings but this half term with a HARVEST flavour.

Meetings take place at Wethersfield URC Hall.

Rainbows - for girls of 5-7 years, meet on Tuesdays, 4.30 - 5.30 pm

Brownies - for girls of 7-10 years, meet on Tuesdays, 5.30 - 7.00 pm

Enquiries to:

Brown Owl - Cherry Threadgold 850481

Snowy Owl - Sarah Pilgrim 850781

WETHERSFIELD PRE-SCHOOL

Anyone interested in starting Pre-

School, please contact Lorraine on 01371 850016 - we have sessions available on Monday, Wednesday and Thursday 9.30 - 1.30.

WETHERSFIELD PARISH CHURCH

Forthcoming events:

Saturday 7th September 6 pm

Annual Youth Concert arranged by Jessie Threadgold

Saturday 14th September - Sponsored Cycle Ride - enjoy a cycle ride (or walk) visiting churches and chapels in Essex and help to raise funds for Wethersfield Parish Church and the Friends of Essex Churches - 10 am to 6 pm. Further details and sponsor forms available from Sarah Pilgrim on 850781.

Saturday 12th October

Harvest Barn Dance, Wethersfield Village Hall Adults £6, Children £3 Contact: Sarah Pilgrim 850781

Saturday 16th November

Christmas Bazaar

WETHERSFIELD GARDEN CLUB

Next meetings:

20th September 'Myths and Legends of Wild Flowers' by Fred Etheridge

A must for those of us who love our countryside. You may have some legends of your own to contribute.

18th October Getting ready for the winter, a talk by David Bond entitled 'Autumn Maintenance in the Garden'

15th November 'English Apples' by Andrew Tann. I am told that Mr Tann knows all there is to know about apples! So bring along your questions and apples you want identified. No meeting in December.

THE CONSERVATIVE PARTIES

It seems that the local Conservatives just can't stop giving parties and nothing, not even a typical British summer, can dampen their enthusiasm.

The heavens opened just as they were about to serve a Luxury Picnic in the garden of St Mary's, Blackmore End last month. The hosts, Adrienne and Bryan Poulson, swung into Plan B and a good time was had by all - indoors! The next party will be a Christmas celebration with drinks and super eats at high noon on Sunday 8th December,

when Lesley and Ralph Nicks will be welcoming guests to Old Hall, Blackmore End.

If you would like to join the Party, please contact David Hammond on 850544 or Pamela Westland on 850705.

WETHERSFIELD HISTORY GROUP

Forthcoming talks:

September 12th in the Village Hall - Derek Norman - "Telling their time III - Wethersfield from a child's eye view"

October 10th - Julian Courtauld on the Courtauld Family history.

November 14th - Maria Meddicott on

the "Medieval Landscape, town & country"

We are always looking for new committee members and anyone interested in joining, please ring Lesley Nicks (secretary) on 850624.

WETHERSFIELD WINE CLUB

The Barbecue on Aug. 10th was timed to start after the mornings torrential downpour finished! and was well attended, although some folks journeys were cut short by floods.

September 13th Members talks and quiz.

October 11th Wine talk and tasting by Brian Wilks (highly recommended!)

November 8th Home made wine competition.

Meetings in Village Hall 8 p.m.

Contact John Pye 01376 326 784

BLACKMORE END Village Hall & Playing Field

Dates for your Diary:

Quiz Night - October 12th. - 7.30pm for 8.00pm start. BYO Food and Drink

Why not book a table for a fun evening! (851340 or 850213)

Firework Spectacular - Saturday 2nd November - Gates open 5.30pm

Christmas Craft Market - Saturday 30th November

WELCOME GROUP

Meetings are held on the first Thursday of each month at 8p.m. in the URC hall. Subs are 50p to include refreshments.

On 3rd October Mr Beanland will be "Talking Turkey". A warm welcome awaits all existing and new members.

WETHERSFIELD FLORAL ART CLUB

A lovely time was had by all at the Summer Social, including lunch and a swim. Many thanks to Dorothy Norman, as host. Forthcoming meetings are:

September 25th - Josie Merchant's arrangements will depict "Sharing Pleasures".

October 30th - a "Hand On" evening has been arranged.

Contact Paulette Bauckham 850 308

BUSY FINGERS, BLACKMORE END

Brenda Sheldrake and Christine Baker have provided expert coaching in the art of ribbon work. A visit to Hatfield House provided some interesting new ideas.

September 17th - Painting on Silk - Leslie Nicks and Sue Bell.

October 1st - Painting on Silk - Leslie Nicks and Sue Bell.

October 15th - Parchment work - with tutor guidance.

November 5th - Handmade Christmas Cards - Margaret Jacks

Meetings in the Village Hall - 1st and 3rd Tuesday of the month 8-10 p.m.. An excellent way to make new friends!

Contact Paulette Bauckham 850 308

WETHERSFIELD PATHFINDERS

Walks start at 10.30 a.m. on the last Sunday of each month. Assemble on Wethersfield Green. Walks are a leisurely 2 hours. Friendly dogs welcome!

PARISH COUNCIL NOTES

Council meetings were held on 17th July and 21st August. This is a selection of some of the main points minuted:

Old Mill Chase (See cover story)
Correspondence with The ECC was reported, including a report that the surface water gullies in the vicinity have been tested and are said to be working well. BDC is the responsible Authority for land drainage on private land, on which ECC believe the problem lies. Council Members, and members of the public attending the meeting, expressed their dissatisfaction with lack of progress on the matter and The Clerk undertook to discuss matters with the parties involved.

Speed Limits

Blackmore End - ECC have advised that, under the Locally Determined Programme, the scheme has low priority and is scheduled for implementation in the financial year 2004/5.

Wethersfield & Shalford - ECC advised that it intends to impose a 40 mph limit on the B1053 Braintree Road from a point 22 metres South of West Drive to a point just beyond Wethersfield Place. A similar order is intended for a 600 metre stretch from near Halls Lane to just short of "Timbers"

The Clerk was asked to respond to ECC with the following comments - " Due to the T junctions at Gosfield Road and Lovers Lane, the blind hill and parking problems at Sandhills, at least the Sandhills area should be included in the

restricted area. the Parish Council's preferred restriction is for the entire Wethersfield to Shalford section"

Traffic Restrictions

The Clerk advised that the Colne Bridge at Aldham, on the A1124 between Halstead and Stanway is to be strengthened, necessitating traffic restrictions

Mobile Library

Some amendments to the van schedules have been proposed by ECC. The Parish Council felt that any reduction in stopping times would cause difficulties and the Clerk agreed to write suggesting that current timings should not be changed.

ECC Area Forum Meetings

These are held quarterly, the next being Thursday 19th September. The public is welcome to attend, with the opportunity to ask questions.

Rights of Way

The Council was advised that a consolidation of the Definitive Map of the District was been done using a modern base map and will be published in November.

Swimming Pools

Minutes received from BDC included the target opening date for a new swimming pool at Halstead Community Centre - December 2003. Discussions relating to provision of a pool at the Braintree Freeport site were also reported.

Local Police

The Council were advised by PC Buckland that he had been posted to Great Dunmow with effect from 30th September 2002.

CRICKET ... cont. from page 1....

tight for the first 15 overs and Euratom were never up with the required run rate. Wethersfield even managed to introduce two (very) occasional bowlers (Simon Jennings and Jon Leary) at the end of the innings both of whom took their first wicket for the club.

The second game was against the current Euratom side, which provided considerably stronger opposition. However Wethersfield fielded a stronger team and raised their game in bowling, batting and fielding. Every time a Euratom player hit the ball in the air it went to a fielder and was caught, the highlight was a stunning low catch near the boundary by Atui Patel. On such a slow wicket the slower bowling was harder to hit and Atui Patel and Mike Townrow both kept a tight line taking five wickets each. Kingsley Raffael and Atui Patel got Wethersfield off to a flying start in reply and the total of 94 was soon overhauled. There was just time for Jerry Wells to come in and hit the winning runs.

All members of the touring party, players, wives and children had a wonderful time enjoying the hospitality of the local side.

Simon Jennings, publican of The Dog Inn, Wethersfield, had arranged for the team to receive sponsorship for the tour from Ridleys. Many of the team then stayed on for an extra few days holiday in what is a beautiful lush green area of Italy. On telling an Italian couple on a ferry boat around lake Maggiore that we had come on a cricket tour they asked if we had been playing on horseback perhaps next time!
Paul Jerram

THE CREAMER FUND

The Community Resource Equipment And Medical Equipment Reserve Fund was started about 15 years ago with donations from families in memory of their loved ones. Over the years the Fund has grown considerably, with money now being raised from raffles and many other organised charitable events, as well as many donations. Among the items purchased have been Cryosurgical instrument, Blood pressure monitors, Nebulisers, Digital camera, ECG machine, Diagnostic ultrasound scanner, Ophthalmoscope for use by the nurses, Spirometers, Pressure relieving mattress, Enuresis alarms and Syringe drivers.

The Fund also gave a considerable contribution towards the purchase and installation of X-Ray facilities, which was then made possible by a single benefactor. Some items require maintenance, and some consumables relating to them. AND by the time you read this article, we will have our Osteoporosis scanner.

The purpose of the CREAMER FUND is

to provide medical resources and equipment (which may not otherwise be available) to enable members of the local community to receive the best possible medical care as near to their homes as is feasible, and we thank you if you have helped in any way to make what we have achieved so far possible.

On **Saturday 28th September** there will be a coffee morning in The United Reformed Church Hall 10.30 - 12.30 when all proceeds will go to THE CREAMER FUND. A small entrance fee will include refreshments, plus all the usual stalls - and some you might not expect. We look forward to seeing you there!

Wethersfield Tennis League

Subject to sufficient interest amongst the membership, it is planned that a simple tennis "ladder" league competition will be in operation between 1st October 02 and 31st March 03 open to all members and all levels of ability.

WETHERSFIELD SURGERY - NEW PREMISES

Freshford Practice, branch surgery currently situated in Silver Street, Wethersfield will be moving to rooms in The Vestry, United Reformed Church, The Green, Wethersfield, from Monday 23rd September.

The Surgery times and services remain the same:-

Monday	11-30-12.30
Wednesday	11.30-12.30
Friday	11.30-12.30

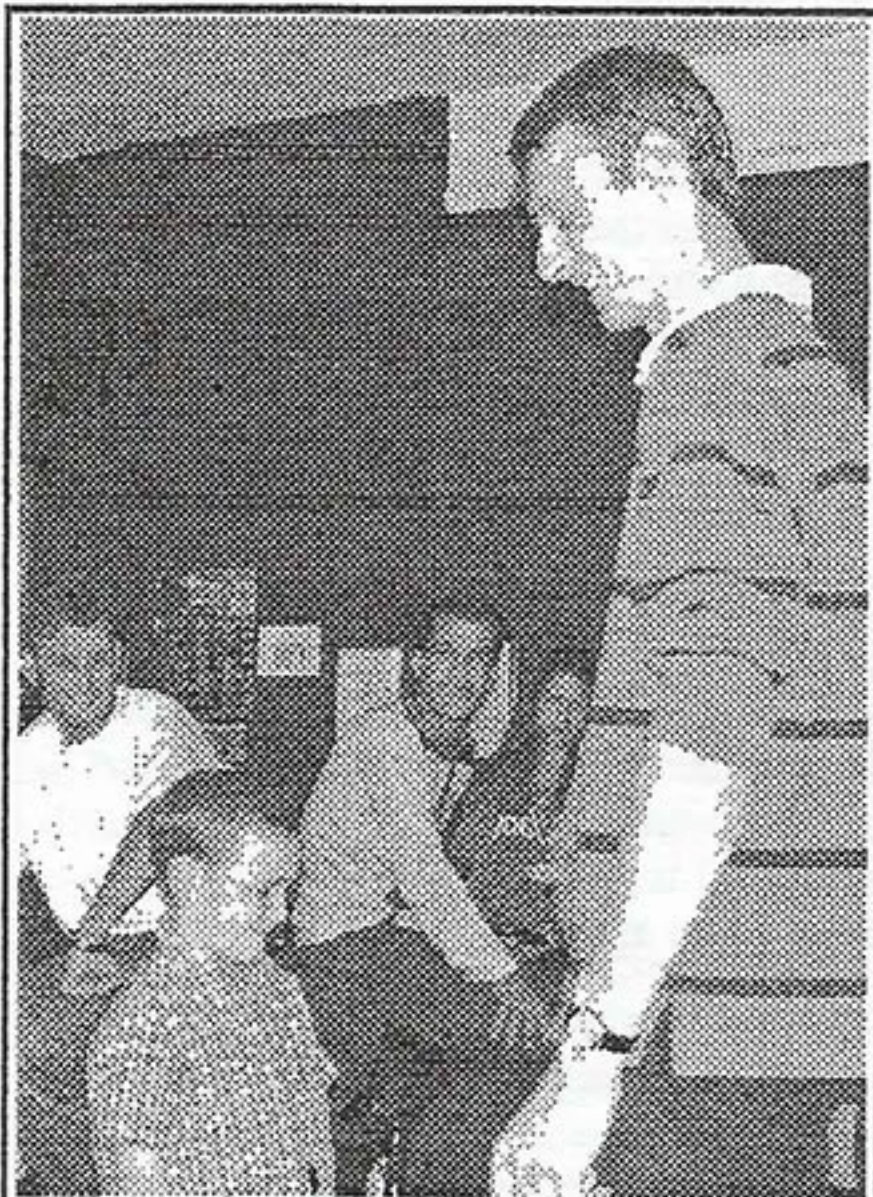
Information or appointments can be obtained by telephoning the main surgery at Finchingfield on 01371810328

Bill Norman (850 094) has produced a hand out with all the details and questionnaire inviting comments on the proposals and other ideas such as possible joining of the LTA, coaching, provision of second court etc. Please contact Bill for copies of the handout.

Local Events.....

WETHERSFIELD RUN RUN

The fun run is usually held on Fun Day, but because of the special events of the Jubilee Fun Day, this year it was organised separately for Saturday August 31st, when the 5 mile course was run in ideal conditions. This year it was organised by Simon Jennings (Dog Inn), with the emphasis on "the Fun rather than the Run"



Simon presents a winners certificate & medal to Harry

Some 40 competitors, including Fire crew in full breathing kit, teams in fancy dress as well as individual runners, walkers and 2 dogs took part, raising about £400 for two local charities - the Essex Air Ambulance and Wethersfield Pre-School.

The Men's overall winner was Martin Gormley in 31min 42 secs. The Ladies overall winner was Frances Holliday (9 & under age group) in 54 mins 12 secs.

Other winners of certificates and medals were as follows:

LADIES

Age 10 - 12	Jasmin Thompson
Age 13 - 16	Kelly Pickess
Age 17 - 29	Pippa Percy
Age 30 - 39	Kathy King
Age 40+	Christine Tekell

MEN

Age up to 9	Harry King
Age 10 - 12	Miles Bullwinkle
Age 13 - 16	Tom Gormley
Age 17 - 29	Daniel Bartlett
Age 30 - 39	Richard Sidebottom

Winner of the Team Race was "Absolutely Trollied" - Richard Norman, Pippa Percy & Jamie Wilkins.



Most Imaginative Run was the Fire Crew - Gavin Leathlean and Damian Barber (Jacko)

Winner of Fancy Dress was the Rock-Weillers, a team from the Dog Inn, who had the added honour of being placed last by time, in spite of plenty of "In-flight refuelling"

The Dog Inn donated prizes, including the new "Team Race" trophy and David and Jan Jenkins sponsored the medals. Simon would also like to thank all those who assisted on the day.

Andrew Bentley "Best Sporting Achievement Award."

The Playing Field Assn. has this year awarded the trophy (named in memory of its former Chairman) to James Jenkins, in recognition of his outstanding sporting achievement and dedication to others over the past 2 years. James has achieved Royal Yachting Assn. levels 2 and 3 in Sailing, level 2 in Power Boat Racing up to 44 ft, bronze Life Saving and is also a qualified GB Archery Association coach.

He currently lives on "TRINITY" lightship working for a Charitable Trust providing residential breaks, including for those with disabilities.

WETHERSFIELD PARISH CHURCH

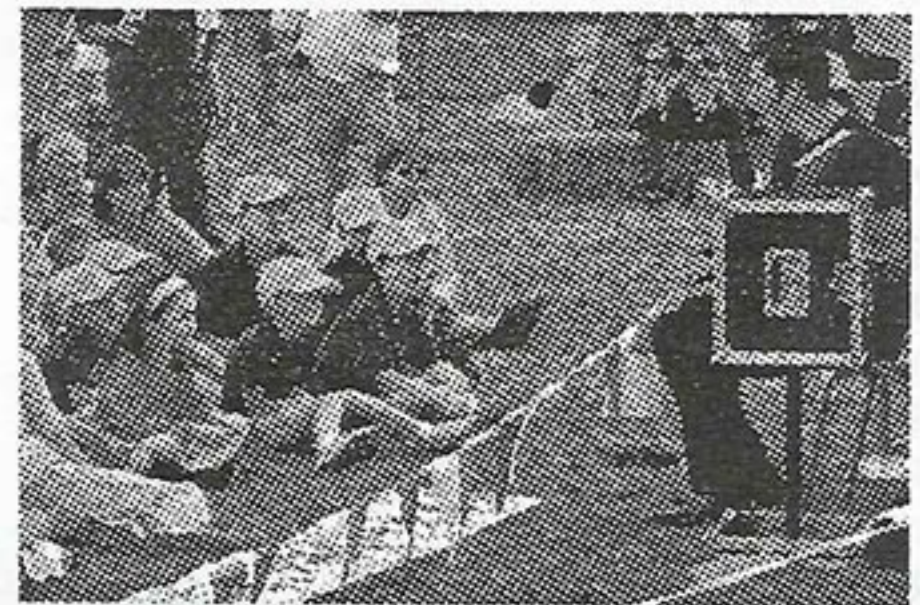
It is pleasing to report several successful activities for and on behalf of the Church since the last issue of the newsletter. Open Gardens on 7th July was well supported and sincere thanks to all the 13 garden owners who put on such a good show. On Saturday 13th July there was a concert by a visiting choir, East Anglian Single Reed Choir, which was much enjoyed. These two events raised nearly £350.00 for Church funds. Christian Aid Week - thanks go to all who donated towards the £345.59 raised through door-to-door collections and a special note of thanks to those who also gave their time to distribute and collect the envelopes.

Activity Week, 29th July to 3rd August, was great fun for about 50 local children and this year's theme was "Celebrations". Children were kept busy with a variety of activities arranged by Sara and Elaine, ably assisted by a band of willing volunteers. The week culminated in a special service in church on Saturday 4th August, when all the children's work was on display.

The PCC currently have two projects in hand, one to increase the weekly income of the Church.

BLACKMORE END Country Fayre, this year held on 20th July, was deemed by everyone to be a most enjoyable occasion. Despite the storms, we were able to boost the Village Hall funds by £1200. Michael J Fitch once again kept everyone amused and the Dunmow Majorettes gave an excellent display even when soaked by a sudden downpour. The games and sales tables were well supported by our visitors, although the overall attendance was down, thank you to everyone who supported us on the day.

Funds are urgently required in order to rebuild the toilets in the Hall and to include a facility for use by the disabled. In order to apply for a grant it is necessary for us to be able to match funds ourselves. The aim is to be able to offer an attractive hall with up to date facilities, meeting statutory requirements, which will be suitable for all occasions and used by all age groups.



Magician holds children's attention!

The second to raise funds to match the grant of £34600 made by English Heritage towards urgent repairs to the roof of the South Aisle. This is just the start of essential work to maintain the fabric of this historic building.

Sunday School resumes on 15th September.

Sunday Services

September

1st 8 am	Holy Communion
8th 11 am	Special Family Service
15th 11 am	Parish Eucharist
22nd 6.30 pm	Evensong
29th 11 am	United Benefice Eucharist

October

6th 8 am	Holy Communion
13th 11 am	Harvest Thanksgiving Family Service
20th 11 am	Parish Eucharist
27th 6.30 pm	Evensong

NOVEMBER - DECEMBER COPY DEADLINE IS OCTOBER 30th

Please note that we are always looking for ideas for articles. Correspondents and editorial volunteers most welcome. news@churchhillhouse.co.uk