

# WETHERSFIELD NEWS

## BLACKMORE END, BEAZLEY END

MARCH/APRIL, 1993

IS Wethersfield Village Hall the greatest village asset or the biggest village eyesore?

Once the maltings, part of the brewery, and given in trust to the village, by Mr and Mrs Maberly of Hillfoot House in 1921, it now presents a sad face to the village green.

And yet this is a listed building in a Conservation Area.

Surrounded by the well-maintained and restored houses and opposite the imposing parish church it stands like some rotten tooth in a beauty queen's smile. No wonder there is little enthusiasm for Wethersfield to enter the Best Kept Village competition, with this impediment.

The Village Hall Committee and the Parish Council can find no way to improve the hall's appearance. Whichever way they try they are stymied by planning rules and by the apparent intransigence of the owners of the derelict building that adjoins the hall itself.

Until the 1970's the Village Hall kept more or less its original appearance, with iron railed steps up to the front door beneath the boarded hoist for sacks. Then came the call for a sheltered bus stop.

Planners would not then, nor will they now, allow any edifice on the green itself. In the 1970s village greens were registered and no building could be put upon them. You can't hang your washing on a line strung between the convenient trees or beat the dust out of your carpet on a village green!

So the parish council and hall committee got together and did the best they could. The steps went, so that wheelchairs could get into the hall, the toilets were rebuilt by hall committee members and the parish council chipped in with cash for the bus stop, never a sympathetic addition to the facade but at least in those days well-used. Now buses are infrequent and anyway the shelter is on the wrong side of the road for maximum use. It has



## Can NOTHING be done about this eyesore?

become mainly the meeting place for often raucous village youngsters, whose opinions are liberally scrawled on the painted interior wall.

As for the derelict building it deteriorates by the month. Riddled with holes and pocked with rough patches of plaster, it is owned, the News understands, by a plumbing contractor who has long since left the village.

A letter sent to the company's address by the Editor, asking for the firm's cooperation, remains unanswered; recorded delivery letters sent by the Hall Committee to the alleged owners have been returned unaccepted.

Chairman of the Village Hall Committee, and Vice Chairman of the Parish Council, Mr Jack Tillbrook, is concerned about the tall chimney on the derelict building. It is breaking away at the top and threatens to send bricks crashing through the hall roof.

"We have tried to buy the building several times. The last time we sent a recorded letter to Mr David Brown, whom we understand owns it, but it came back. They got planning permission to convert it to a dress shop about 15 or 18 years ago. It has been derelict ever since.

"As for the bus stop, we have threatened to take it down, because you cannot keep it nice."

Is there NOTHING to be done? Yes, there is. Write or phone Jack Tillbrook (850270), John Nottage, as Chairman of the Parish Council (850358) or Allan Frost, the Clerk to the Parish Council, 23 Hereward Way, Wethersfield, (851146) and demand a public meeting.

It is the Annual Parish meeting in April 21 at 7pm in the Village Hall. If sufficient people are concerned enough to write or phone the people above, an appropriate planning officer could be asked to attend to set out the position then.

If no good comes of that perhaps an approach should be made to our local MP, the Rt Hon Tony Newton. The Hall is the heart both of village social life and the village scene. It deserves our protection.

## HEALTH CENTRE OPENING

THE Freshford Practice's new Health Centre at Finchingfield will be opened officially by the Rt Hon Tony Newton, MP on Friday, March 12.

If you want to have a look round at the new facilities you will be welcome to visit the Centre on the following day, Saturday 13th or on Saturday 20th March, from 11am to 2pm. Surgeries will commence at the new premises on Monday April 5th.

## 60 farms join fight against crime

WETHERSFIELD neighbourhood beat officer PC Richard Buckland has teamed up with local farmers to launch Pant Valley Farmwatch.

Seeing the success of urban Neighbourhood Watch schemes Richard thought they could be adapted to fight the rising wave of farm crimes, from arson in barns to attacks on livestock.

About 60 farmers from Finchingfield, Wethersfield, Shalford, Cornish Hall End, Great Saling and Great Bardfield met at the inaugural meeting at Blackmore End Village Hall.

Richard explained how the Farmwatch works. At the first sign of anything suspicious, such as loiterers round buildings or discovery of an actual crime, the farmer contacts the police, who ring Ernest Doe and Sons, the agricultural suppliers, where Richard Legge is co-ordinating the scheme.

Mr Legge in turn contacts four area co-ordinators who then pass on the alarm to individual farmers.

"So far, luckily, we have not had any really great problems," said PC Buckland.

"I just felt we ought to shut the stable door before the horse bolts." Introductory packs and stickers and crime prevention advice are available from him on 0371 850373.



# WHAT'S HAPPENING...

DEADLINE for next issue: April 22nd

## Spring to it

WITH good weather just around the corner for gardeners keen to get outdoors, Lynn Hamblin's talk on March 19 on Spring Flowers and Plants to Wethersfield Garden Club is spot on for timing. There will be plants for sale.

It will also be AGM night and there will be garden tips, plant stall, refreshments and a raffle. The AGM will start at 7.45 pm.

Bill and Ben's Question Time is the club's April 16 event, when Mr French and Mr Gilbert will be the popular guest speakers. Take your questions.

The Saling Hall Lodge garden of Ken Akers, the club's honorary member, is among those open under the National Gardens Scheme on April 18, May 16, 30, June 27 and July 18, a treat not to be missed. Leaflets are available.

## Floral fun

AT the Floral Art Club on April 27 Mrs J. Lewis will be having "Fun with Flowers" and for May 26th the club plans a film show, "Anchors Away", followed by a light supper. Meetings are in the village hall.

At the recent AGM Mrs Eileen Tillbrook became chair person, Mrs Dorothy Norman secretary and Mrs Shirley Bedding, treasurer. Subscription is to stay at £5 a year and new members are welcome.

ON Mondays at the Hereward Way, Wethersfield home of Joy Frost, a group of neighbours get together then to practise their cross-stitching. If it's something you've always wanted to do give Joy a ring on 851146.

IF your feet are "killing you" there is a free chiropody service by a qualified NHS chiropodist at Shalford Village Hall on four Thursday mornings out of five. Ring Mr and Mrs Andrew Overall on 850472 if you need transport. Drivers are volunteers but there is a piggy-bank for donations towards the cost of hiring the hall.

## Sporty lot

THEY'RE a sporting lot down at the Men's Club. In addition to the established darts and snooker teams (including a ladies darts team), the Club now has a pool team and has acquired a soccer team, courtesy of the footballers previously based at The Dog Inn.

All the sporting sections of the club actively compete in local leagues. The footballers are in the Braintree and North Essex Sunday League and they have also had a very good Cup run, reaching the semi-final.

BLACKMORE End Village Hall Committee are running a Quiz Night on March 27 at 7.30pm. Tickets are £2.50, including supper. If you can't raise your own team go along and join one of the others. Ring 850345 or 850845 for details and book in a team.

On Saturday, April 3rd, Blackmore End Village Hall is the venue for a Whist Drive and Raffle to raise funds for the Royal National Institute for the Blind.

Admission is 50p. Enquiries to Freda Tyrrell (850948). Regular Whist Drives are held on Fridays in the village hall at 7.30pm, entrance 30p.

## For cooker

BLACKMORE End After 8 Ladies Group held a very successful coffee morning at the home of Brenda Sheldrake and raised £50.36 towards an electric cooker for the village Hall.

On March 18 there will be another coffee morning, this time at Lealands, home of Pat Peal from 10.30am. Admission 50p and there will be a raffle and bring and buy stall.

The group's last meeting was addressed by Mr Peter Smith who talked about and demonstrated his collection of 600 whistles. On Monday March 22 the talk will be by Barry Moulton on "Waxes Waxes" and on April 26 Tessa Allen will speak about the Macmillan Nurses.

## After Henry

VISITORS to Wethersfield Parish church may have seen the graffiti-covered alabaster figures of Henry Wentworth and his first wife Elizabeth on their tomb in the chancel. Henry Wentworth, first of his family to come to Essex, lived at Codham Hall and died in 1482.

On Thursday March 11, at 8pm in Wethersfield Village Hall, Roy Sutton will tell Wethersfield Local History Group how he traced the Wentworths in their travels from Yorkshire to Suffolk to Essex by a study of their heraldry.

The meeting of the Group on April 8 will take the form of an "Antiques Road Show" conducted by Mr Dan Jackson from Cambridge. Members may bring - at their own risk - up to two small 'antique' items, for Mr Jackson to comment on.

THE Thursday Group which meets on the first Thursday of each month at the United Reformed Church, Wethersfield, will hear a talk on the work of Traidcraft by Helen Redfern of Colchester, at 8pm on April 1. Craft work will be on sale at the meeting. The 40p admission charge includes refreshments. The group is open to men and women.

WETHERSFIELD and Shalford branch of the Royal British Legion are holding a Jumble Sale on March 27 in SHALFORD village Hall at 2pm in aid of branch funds. Admission is 10p and all donations of bric à brac, cakes and, of course, Jumble are welcome at the hall after 10am on the day or they can be collected if you ring Tom Tyrrell (850948) or Jim Chapman (850837).

WETHERSFIELD Playgroup plan a Rummage Sale at Wethersfield Village Hall on Saturday March 20 at 2pm. Admission will be 10p and you are asked to support the group by donating your "rummage". There will also be a cake stall. Before the day you can contact: Wethersfield: 850935; Blackmore End: 851384.

## New Brownie

FIRST Wethersfield Guides and Brownies took part in the Divisional Thinking Day service at Earls Colne on February 21. Each company took the flag and produce from a particular country, Wethersfield choosing Kenya and taking along coffee and coconut for needy people. The Brownies have a new member: Gemma was enrolled last month. Contact: Sarah Pilgrim (850781).

## IS YOUR BEST CHINA STANDING ON THIS CAR?

RIDDLE: When is a car, not a car? Answer: when it is a sideboard.

At the Local History Group's February meeting, when 115 people turned up to hear David Lindsay, grandson of Sir Fortescue Flannery, talk about life at Wethersfield Manor, one visitor, Mr Ted Thompson, was delighted to see this picture of one of Sir Fortescue's old Bentall cars.

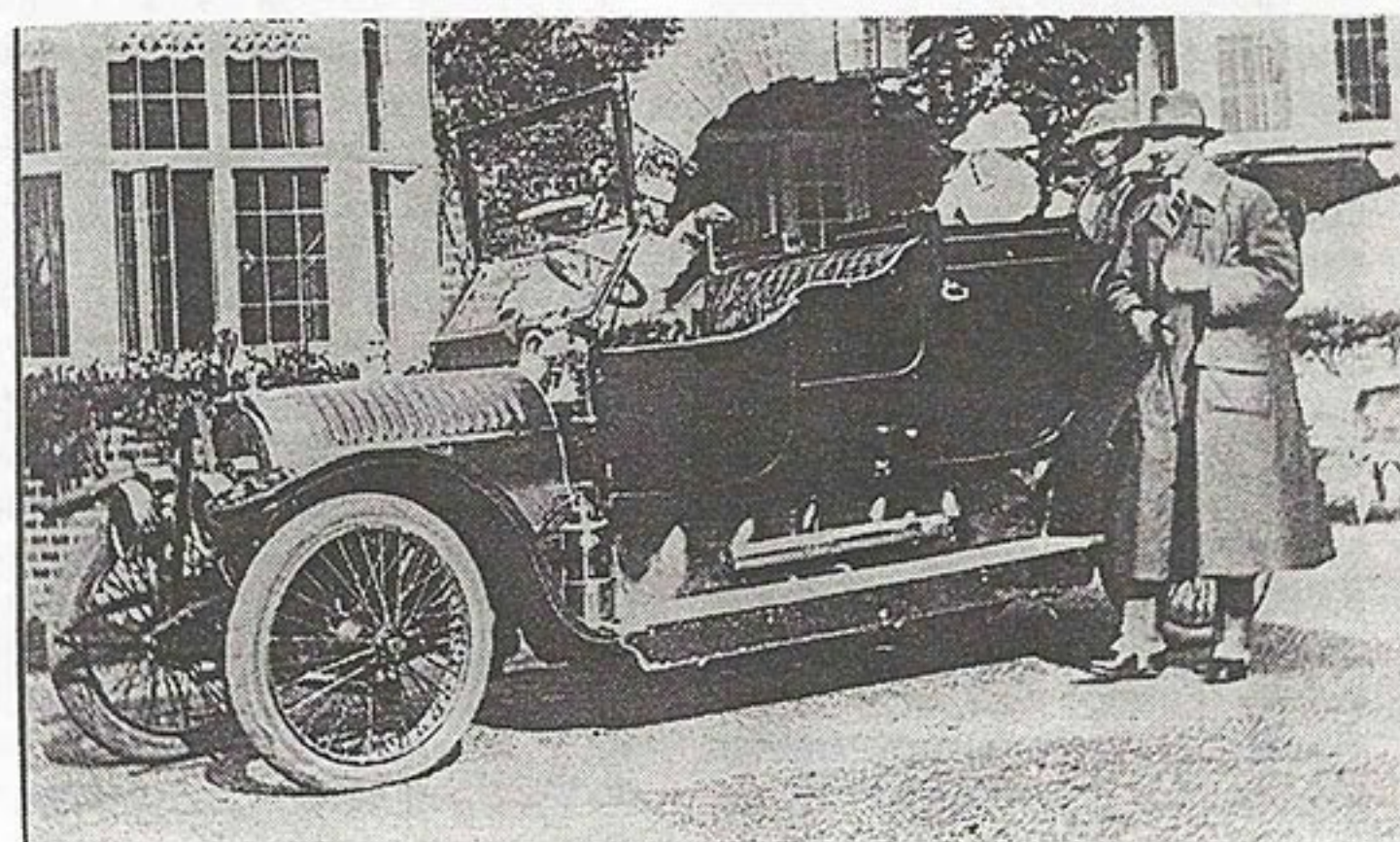
He recalled his grandfather, Bert Gilbey, who worked at Long's (now Tillbrook's) garage, being given the

job of breaking it up.

Bert was impressed with the fine mahogany veneered panels on the car and got to work with his woodwork tools. Soon he had a splendid sideboard in his Silver Street home.

When the family moved there was no room for the sideboard and it went to a dealer in the Blackmore End area. Ted would love to find it again.

If you have a sideboard that revs up in the night it could be Bert's!





INTRODUCING our new Deputy Editor,  
Brian Lovell from Wethersfield,  
and young writer  
Elizabeth Allen from  
Blackmore End

# Off the wall

*Hello,*

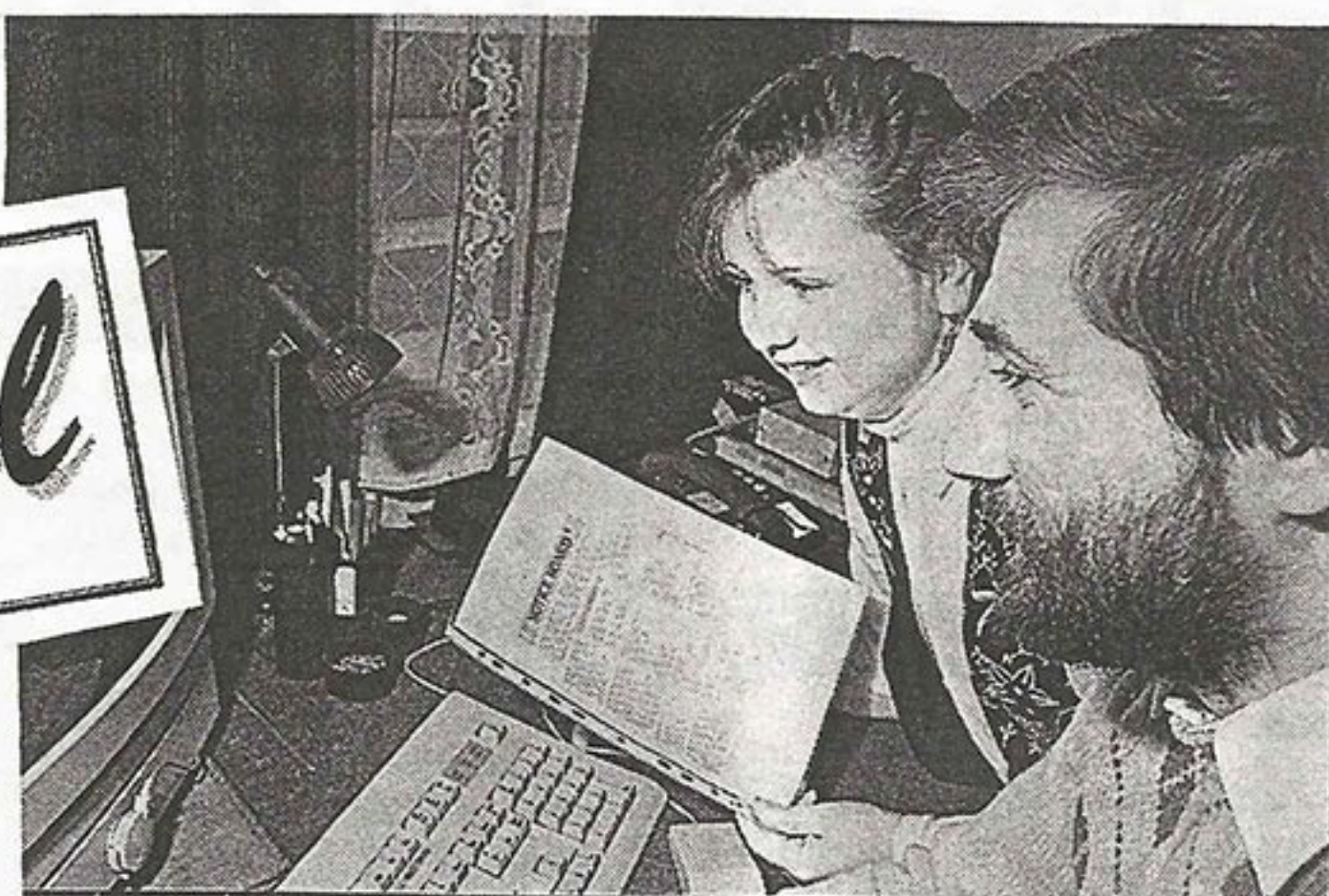
MY name is Elizabeth Allen, I am 13 years old and I go to Chelmer Valley High School. I moved into Blackmore End in September. At the moment I'm living in our large garage while our house is being built!

I shall be writing about the environment and doing book/TV and cinema reviews, questionnaires and puzzles.

I would like to organise a baby-sitting club for Blackmore End and Wethersfield, if anyone is interested in baby-sitting, please phone 0371-850092. If anyone uses baby-sitters regularly and would like to use baby-sitters in the area please GIVE ME A CALL.

I would also like to organise a youth club for young people in Blackmore End and Wethersfield at the village hall in Blackmore End. If anyone would like the youth club to go ahead and would be prepared to help me organise it or has had experience in running a youth club GIVE ME A CALL, or write to the Editor.

Right: Brian and Elizabeth at work on this issue



## Flapjacks

INGREDIENTS: 175g butter; 125g brown sugar; 250g porridge oats; 50g desiccated coconut; 25g Golden Syrup

METHOD: Melt the butter and syrup into a pan. Remove from the heat and add the remaining ingredients. Turn into a greased 10 x 28cm tin and spread evenly. Bake in a preheated oven at 180C (350F), gas mark 4, for 15 minutes. Cool slightly then cut into fingers and remove from the tin.

## Did you know?

Haji Mohammed Alam Channa of Pakistan has the biggest feet in the world. He wears size 22 sandals.

ACCORDING to a recent survey one in ten French families don't buy soap!

BRITAIN'S Top Ten favourite flavoured crisps are: 1 Ready Salted; 2 Cheese and Onion; 3 Salt and Vinegar; 4 Bacon; 5 Chicken; 6 Beef; 7 Prawn Cocktail;

8 Spring Onion; 9 Tomato; 10 Pickled Onion.

STUFFED dormouse was a favourite delicacy of the Romans.

THE favourite school subject of Britain's 9-13 year olds is MATHS.

## What would YOU like to see in this column?

Please fill in this form and post or send it to the Editor at Virginia House, High Street, Wethersfield, Braintree, CM7 4BZ

### I WOULD LIKE TO READ:

Environment news ..... Questionnaires.....

TV/Cinema reviews ..... Did you know?.....

Name: .....

Address: .....

Phone: .....

# Now that Home Helps can't do your shopping...

FROM March 1st Home Helps were no longer allowed to fetch shopping for their elderly and housebound clients.

Instead, an order must be placed with local suppliers who will deliver the shopping to the client.

In some rural areas this will be a sad blow to people often living on their own, but luckily in Wethersfield and Blackmore End,

## County candidate

JOHN FINBOW, of Fairy Farm, Wethersfield, Braintree District Councillor for Three Fields, has been selected as Conservative candidate for Bocking in the forthcoming Essex County Council elections.

and to some extent Beazley End, the position appears to be better than average.

GROCERIES: At the Top Shop in Wethersfield (850555) Noel Choat accepts phone orders which he delivers on Fridays. It means thinking ahead for your needs, since obviously he cannot make a special delivery if you have just run out of something.

BUTCHERY: Brian Langford, in Silver Street, Wethersfield (850258) will deliver orders, normally on Tuesdays and Fridays. In the village other delivery days are possible by arrangement.

FISH, FRUIT AND VEG: R.G. Jeffrey of Saffron Walden (95 523189) visits Blackmore End between 9 am and 10.30am on Thursdays, then goes on to

Beazley End.

BREAD: The Breadman (0440 730234) visits Wethersfield and Blackmore End on Mondays and Thursdays between 11am and 1pm.

BOOKS: The Library van comes to Wethersfield on Thursdays, about 11.15am at the Village Hall and later at Hereward Way. It visits Blackmore End (Phone box) at about 2.05pm on Thursdays.

PENSIONS: Home Helps may continue to collect these if no alternative solution is available.

Anyone who has problems brought about by the revised Home Care services should contact their local Organiser or the Social Services Department (0376 550252).

# Free on Fun Day

THE Derek Flannery Playing Field Association wants to thank all the contributors to their new 100 club.

If you have not yet received an application form then contact either Dave Nightingale (850013) or see Vic Law at the DIY store. Because of the support received the association has decided to give free admission to the Fun Day on July 11.

As usual Fun Day will include stall-holders operating on a 50-50 basis for themselves and the Field. Contact Andrew Bentley (secretary) on 850738 for details. The Association needs a large marquee for the day. If you can lay hands on one let Andrew know.

Before then, on March 27, the Association is holding an Auction in the pavilion at 2pm. You can take any items for sale there from 9am on the day.



## Clipboard

A REQUEST for a second village post box near the Playing Field has been turned down by the Royal Mail because the site is less than half a mile from the Post Office and its post box.

Residents could, however, hand mail to the postman or woman, providing the letters were properly stamped.

THE Council has paid the bill for the election of a parish councillor for Blackmore End Ward. It totalled £446. Printing

costs were £66.50; professional fees £317.54 and transport fees £62.36.

THE Parish Council received a petition with 58 signatures from residents in Saffron Gardens, where they had proposed to site a bottle bank on an experimental basis.

In view of this opposition to the scheme it was decided not to go ahead with it. The council would now welcome suggestions from residents as to a suitable site for the bank.

THE council was still awaiting a reply from the Highways Authority concerning damaged road edges and potholes at Blackmore End.

A LETTER of objection to proposed plans for Wethersfield Mill to become living accommodation was received from Mrs. Runmore. It has been passed to Braintree District Council.

SMALL donations have been made by the council to 1st Finchingfield Scout Group to help with the cost of canoes for outdoor activities and to Wethersfield United Reformed Church towards the upkeep of the churchyard.

FOLLOWING the refusal of an application for an illuminated sign at the Top Shop, Wethersfield, the council had no objection to a new application for a wooden sign.

THE attention of the Superintendent of Police is to be called to haphazard parking in Saffron Gardens and Hereward Way, Wethersfield, which it was thought could hamper emergency services.

A COMPLAINT had been received about overhanging growth at Blackmore End and Beazley End but the council did not consider it a danger.

THERE is a vacancy for a resident at Gower House in Wethersfield for a single person. Applicants should be residents of Wethersfield, Blackmore End or Beazley End or a close relative of a resident. Details from F.A. Frost, 23 Hereward Way, Wethersfield.

Clerk to Council: ALLAN FROST, 0371 851146

# People

Ring 0371 850092 with your news of people or events

## Jack has been long at his Post

AFTER 32 years on the parish council, the last five as vice chairman, 38 years on the Village Hall Committee, 17 of them as chairman, and 34 years as village postmaster, you could say Jack Tillbrook has done his share for Wethersfield.

Add to that 24 years in the Fire Service, 18 of them as Chief Fire Officer, and you can see why Jack is thinking of retirement. Well, perhaps not entirely. "I shall still be junior partner and petrol pump attendant for son Stephen at Tillbrook's garage!"

Jack's wife, Eileen, won't object to that, though she doesn't want to leave Hope Hill House where they have spent all their married life.

Which is why the nearby Post Office building has had a face-lift, so that any new owner can have



Man of letters: Jack Tillbrook

living accommodation on the premises.

Jack's father and grandfather were farming Boydells Farm when he was born but later they moved to Rotten End Farm house.

Like all the farm lads Jack spent his Saturday nights at the Coop Hall dances in Halstead.

"I was the lucky one, father had got a car and I used to take a bunch of boys with me. I don't know how the girls got there. But

I know how some of them got back!"

It was at one of these dances Jack met Eileen and they married in 1958, moving the post office, then in the High Street where it had been for 21 years, to Hope Hill House. "We started with the room to the left of our front door and our porch," he said.

"We spent our honeymoon getting the post office ready for the following week.

"When we came there first there were 5,000 Americans at the base. All the European and local mail came through us, they used to pick the mail up with a lorry about 9am, four or five mailbags. I had to check it all; that was my job as postmaster after the other mail had been sorted. That was in 1959.

"We came in at the deep end. They were still building the houses on the base because I used to take telegrams for the Irishmen from their wives saying 'Send me some money'."

At just on 65 Jack Tillbrook has certainly earned his retirement – even though it is only part-time.

## Thanks for the cards

MRS Frances Rhodes of Saffron Gardens has returned home after 3 months in hospital. She would like to thank all those kind friends and neighbours who sent cards and Get Well messages.



Woman of beauty: Anne Allcock

ANNE ALLCOCK, who was brought up in Wethersfield and whose parents, Jean and Bob Lawrence live in Saffron Gardens, has started a beauty service in the district.

Anne left school at 16 to become a secretary, working for the Foreign Office and travelling the world before deciding to re-train as a beauty therapist.

She qualified at the Cambridge School of Beauty Therapy last year and last month opened her own health and beauty service, at Fairlight, Forrey Green, near to Sible Hedingham. She will also undertake the treatments in a client's home.

Treatments Anne offers include facials, make-up lessons, manicure and pedicure, waxing, electrolysis, slimming treatments and aromatherapy.

Anne can be contacted on 0787 60999 or on her mobile phone 0850 302636.

## Welcome to Frances Grace

DAVID and Charlotte Holliday, of High Street, Wethersfield, who have taken part in many parish activities since they moved here only a few years ago, now have a baby daughter Frances Grace, born on February 17 (9lb 2oz). David is a cricketer and treasurer of the garden club and Charlotte is a flower arranger and committee member of the Local History Group and Garden Club.